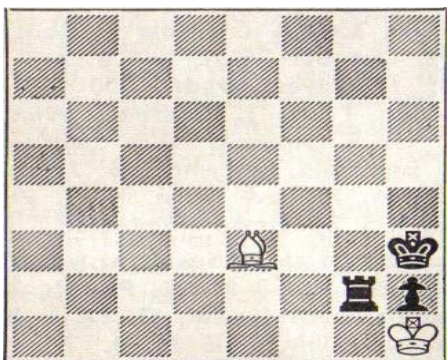


Birmingham & District Chess League: 2008/2009 – Bulletin 2

Well, as I have very few results to print so far, the League Tables can wait until next month. Also, as I've had no response yet to my request for people to send in games, problems, letters etc. I thought I'd get things rolling (and brighten up the front page a bit) myself. So knot your brows and have a go at the following puzzles:

Your task is the same in both positions **White to play and Draw**



(1) From an un-attributed game played in Austral



(2) A study by Henri Rinck

Solutions on back page. The second one is not easy! Thanks to "Chess" magazine (as was) for introducing me to these.

| <u>Outstanding Registrations</u> | | <u>Late Registrations</u> | |
|---|---------------------------------------|---|-----------------------|
| <u>Kynoch/Barn</u> | <u>Aldridge & District</u> | Div 6 | <u>Eligible from:</u> |
| Div 1 (Adj) | Div 5 (Adj) | Cole, Jason (Redditch) | 17/9/08 |
| Baruch, Andrew D J | Andrews, Leslie | Corr, Philip (Olton) | 23/9/08 |
| Burton, Richard J | Darby, Gary | Holmberg, John (Redditch) | 29/9/08 |
| Hickey, Anthony J | Hough, Steve (30/9/08) | Qureshi, Asim (Olton) | 2/10/08 |
| Ingram, Keith R | Smith, Gordon | Terry, Nigel (Olton) | 06/10/08 |
| Roberts, Nick W | Smith, Robert S J | Div 5 | |
| Webster, Paul | Strachan, Jack | Stokes, Paul (Westminster) | 24/9/08 |
| Wright, Larry | Winman, Stefan | Masefield, John (Lichfield) | 16/09/08 |
| Div 5 (Adj) | Woodward, Alar | Div 4 | |
| Dawson, Brian | Woodward, Graham | Parkinson, Adam (Warley Quinborne) | 24/09/08 |
| Morgan, Wilf | | Div 3 | |
| Murphy, Philip | | Jones, Philip (Boldmere St. Michael's) | 24/09/08 |
| Peers, Mike | | Div 2 | |
| Rake, Tony | | Rome, Antony (Birmingham) | 05/10/08 |
| Wickett, Gary | | | |
| Div 6 (Adj) | | | |
| Bolton, Andy | | | |
| Dawson, Betty | | | |
| Hill, Doug | | | |
| Morgan, Grendon I | | | |
| <u>Registration Corrections</u> | | <u>Re-arranged Fixtures</u> | |
| <u>Sutton Coldfield</u> | | Div 1 | |
| In Bulletin One "Dhesi, Iqbal" should have been listed as registered in Div 1 not in Div 3. | | (102) Solihull v Walsall Kipping: now 25/3/09 | |
| <u>Mutual Circle – Div 5</u> | | Div 6 | |
| An L was (again!) omitted from the name of "Woolaston, Alan" in the early (Microsoft 'Word') version of Bulletin 1. | | (610) Solihull v Greenlands: now 11/3/09 | |

LEAGUE RESULTS

Division One

101 S. Birm'ham B 4 S. Birm'ham C 2

| | | | |
|-----------|---|---------------|---|
| D Malik | 1 | M Smyth | 0 |
| L Hylands | 0 | J Fallowfield | 1 |
| K Malik | 1 | S Williams | 0 |
| D Dunn | 1 | D Whitmore | 0 |
| R Hearne | ½ | N Clarke | ½ |
| A M James | ½ | T Lane | ½ |

103 S. Birm'ham C 1 S. Birm'ham A 5

| | | | |
|---------------|---|-------------|---|
| M Smyth | 0 | J Swindells | 1 |
| J Fallowfield | 0 | P Padilla | 1 |
| S Williams | 0 | D Malik | 1 |
| G Ali | 0 | D Dunn | 1 |
| D Whitmore | ½ | R Hearne | ½ |
| N Clarke | ½ | T Lane | ½ |

104 Olton 2 ½ Shirley & Lucas 3 ½

| | | | |
|------------|---|-----------|---|
| P Holt | ½ | D Mason | ½ |
| A Lloyd | 0 | J Gallows | 1 |
| D Gostelow | ½ | R Walker | ½ |
| R Smith | ½ | A Walker | ½ |
| M Cundy | ½ | L Child | ½ |
| R Reynolds | ½ | J Asbury | ½ |

106 Sth. Birmingham C 4 Lichfield 2

| | | | |
|---------------|---|------------|---|
| M D Smyth | 1 | P Wallace | 0 |
| J Fallowfield | 0 | M Staples | 1 |
| S Williams | 1 | J Keaveney | 0 |
| G Ali | 0 | P Collins | 1 |
| D Whitmore | 1 | G Lamb | 0 |
| G Hope | 1 | M Maher | 0 |

108 S. Birm'ham A 4 ½ S. Birm'ham B 1 ½

| | | | |
|-------------|---|-----------|---|
| R James | 1 | D Malik | 0 |
| J Pitcher | ½ | L Hylands | ½ |
| J Swindells | 1 | K Malik | 0 |
| P Padilla | 1 | D Dunn | 0 |
| J Emmanuel | 1 | R Hearne | 0 |
| D Lee | 0 | A M James | 1 |

109 Shirley & Lucas 3 Halesowen 3

| | | | |
|------------|---|-------------|---|
| D Mason | 1 | S Fishburne | 0 |
| I Galloway | ½ | J Edge | ½ |
| S Briggs | 0 | M Hunt | 1 |
| R Walker | 0 | M Bethel | 1 |
| D Thomas | 1 | A Ambrose | 0 |
| A Walker | ½ | W Peck | ½ |

Division 2

201 Olton B 1 Olton A 5

| | | | |
|-------------|---|--------------|---|
| K Allen | ½ | R C Reynolds | ½ |
| A Cottom | 0 | R Wallman | 1 |
| J Llewelyn | ½ | J McDonald | ½ |
| J Gillespie | 0 | D Cheshire | 1 |
| W Archibald | 0 | T Holt | 1 |
| D Stockwin | 0 | P Hodgskin | 1 |

202 Stourbridge A 5 Stourbridge B 1

| | | | |
|---------------|---|-------------|---|
| N Fallowfield | 1 | D Scriven | 0 |
| S Jukes | 1 | J Loynes | 0 |
| J Wilson | ½ | J Humphries | ½ |
| J Foxall | ½ | R Wilkinson | ½ |
| E Horwill | 1 | J Webster | 0 |
| T Kosted | 1 | M Cahill | 0 |

203 Warley Quin. B 1 Warley Quin. A 5

| | | | |
|------------|---|------------|---|
| A Agnew | 0 | A Southall | 1 |
| J Fahy | ½ | C Gordon | ½ |
| S Smith | ½ | A Singh | ½ |
| A Burnet | 0 | A Draper | 1 |
| S Moxley | 0 | M Doran | 1 |
| W Rawlings | 0 | J Turner | 1 |

204 Tamworth & D. A 4 Tamworth & D. B 2

| | | | |
|-------------|---|-------------|---|
| P Briggs | 1 | M Kimberley | 0 |
| R Allen | ½ | S Walton | ½ |
| K Hern | 0 | R Hedges | 1 |
| D Williams | 1 | D Hoddy | 0 |
| S Kimberley | ½ | P Oliver | ½ |
| J Hoddy | 1 | A Smith | 0 |

205 Stourbridge B 1 Warley Quinborne B 5

| | | | |
|-------------|---|----------|---|
| B Dudley | 0 | A Agnew | 1 |
| D Scriven | 1 | J Fahy | 0 |
| J Loynes | 0 | S Smith | 1 |
| R Wilkinson | 0 | J Turner | 1 |
| J Webster | 0 | A Moxley | 1 |
| D Allford | 0 | S Moxley | 1 |

206 Lichfield 1 Warley Quinborne A 5

| | | | |
|----------------|---|------------|---|
| R Farmery (?)* | 0 | A Southall | 1 |
| J Smith | ½ | C Gordon | ½ |
| A Grant | ½ | A Singh | ½ |
| Y Slobodyuk | 0 | A Draper | 1 |
| A Hall | 0 | M Doran | 1 |
| I Caithness | 0 | A Burnet | 1 |

* "Farmley" on match card

207 Tamworth & D. 4 Sth. Birmingham 2

| | | | |
|-------------|---|----------|---|
| P Briggs | 1 | D Lee | 0 |
| R Allen | ½ | G Hope | ½ |
| K Hern | 1 | R Glass | 0 |
| D Williams | ½ | T Lane | ½ |
| S Kimberley | ½ | T Walker | ½ |
| S Walton | ½ | R Glass | ½ |

208 Olton A 3 Boldmere St. Michael's 3

| | | | |
|--------------|---|--------------|---|
| R C Reynolds | 0 | J Mildenhall | 1 |
| R Wallman | 1 | J Fagan | 0 |
| J McDonald | 0 | K Thomas | 1 |
| D Cheshire | 1 | A Wilson | 0 |
| T Holt | 1 | M Biddle | 0 |
| P Hodgskin | 0 | P Loach | 1 |

Division 3

302 Shirley & L. A 4 ½ Shirley & L. B 1 ½

| | | | |
|-----------|---|------------|---|
| R Purcell | 1 | L Rawson | 0 |
| J Freeman | 0 | K Gilbert | 1 |
| E Ward | 1 | G Christie | 0 |
| K Child | ½ | F Jimenez | ½ |
| J Dale | 1 | M Warden | 0 |
| N Foster | 1 | B Knee | 0 |

303 Redditch 2 Sutton Coldfield 4

| | | | |
|------------|---|-------------|---|
| T Robinson | ½ | M Soszynski | ½ |
| G Stanton | 0 | L Hayden | 1 |
| J Heath | ½ | G Windows | ½ |
| I Clack | 1 | A Kent | 0 |
| A Davis | 0 | R Lawrence | 1 |
| M Clack | 0 | C East | 1 |

304 Mutual Circle 5 Wolseley 1

| | | | |
|-----------|---|--------------|---|
| R Huq | 1 | P Sherman | 0 |
| D Fisher | ½ | G Maciel | ½ |
| M Paffard | ½ | P Lawrence | ½ |
| P Boynton | 1 | E Maciel | 0 |
| G Evans | 1 | G Stepanovic | 0 |
| S Goray | 1 | K Nooney | 0 |

Division 4

401 Northfield Ch.1 ½ St.George's 4 ½

| | | | |
|--------------|---|-------------|---|
| P Maddocks | 0 | L Collier | 1 |
| R Gough | 0 | L Johnson | 1 |
| S Bowen | 0 | K Wise | 1 |
| P Hodgkinson | 1 | R McIntosh | 0 |
| M Rees | 0 | C Griffin | 1 |
| L Willmott | ½ | P Elkington | ½ |

402 S. Birmingham 3 ½ Sutton Cold. 2 ½

| | | | |
|-----------|---|--------------|---|
| R Hardy | 1 | S Jobanputra | 0 |
| G Perks | 0 | D Green | 1 |
| M Nevin | 0 | H Dhesi | 1 |
| M Loat | 1 | A Dhesi | 0 |
| F Dickson | ½ | M Brown | ½ |
| T Tidman | 1 | G Carpenter | 0 |

404 Westminster 1 ½ Mercia 4 ½

| | | | |
|------------|---|------------|---|
| B Steeles | ½ | M Share | ½ |
| R Leaper | ½ | D Perks | ½ |
| S Phillips | 0 | J Phillips | 1 |
| G Goddard | 0 | B Smith | 1 |
| J Burke | ½ | K May | ½ |
| D Cooper | 0 | D Webb | 1 |

405 Olton 3 Northfield Checkmates 3

| | | | |
|-------------|---|--------------|---|
| J Gillespie | ½ | P Maddocks | ½ |
| W Archibald | 1 | R Gough | 0 |
| D Stockwin | 1 | S Bowen | 0 |
| M Kerr | 0 | P Hodgkinson | 1 |
| P Singh | ½ | M Rees | ½ |
| T Evans | 0 | L Willmott | 1 |

LEAGUE / CUP RESULTS

Division 5

501 Wolseley 3 ½ Westminster 2 ½

| | | | |
|----------|-----|---------------|---|
| G Bates | ½ | G Goddard | ½ |
| D Reeves | 1 | J Burke | 0 |
| P Joiner | 1 | D Cooper | 0 |
| K Nooney | 0 | R Trevis | 1 |
| D Parr | 1 | D Littlehales | 0 |
| P Spence | def | H Shrianne | 1 |

502 Halesowen ½ W. Mid. Police 5 ½

| | | | |
|-------------|-----|-------------|---|
| P Evans | 0 | M Cooper | 1 |
| J Southcote | 0 | P Hardstaff | 1 |
| A Taylor | ½ | H Quail | ½ |
| J Taylor | 0 | R Holman | 1 |
| D Martin | 0 | M Hathaway | 1 |
| default | def | P Butler | 1 |

504 Lichfield 4 Bushbury 2

| | | | |
|-------------|---|--------------|---|
| G Monks | ½ | A Schroeder | ½ |
| J Marriott | 1 | D Molineux | 0 |
| A Hall | 1 | P O'Donoghue | 0 |
| D Short | 0 | D Buckley | 1 |
| C Kirk | 1 | J Whitehead | 0 |
| I Caithness | ½ | P Scott | ½ |

Division 6

601 Solihull 3 Mutual Circle 1

| | | | |
|-----------|---|-------------|---|
| D Horsley | ½ | S Chowdhury | ½ |
| J Green | ½ | P Heaney | ½ |
| D Randall | 1 | J Iqbal | 0 |
| N Peake | 1 | C Mills | 0 |

602 Boldmere SM. B 0 Boldmere SM. A 4

| | | | |
|-------------|---|----------|---|
| G Osborne | 0 | L Tsoi | 1 |
| A Sturch | 0 | R Taylor | 1 |
| L Berenbaum | 0 | G Harman | 1 |
| B French | 0 | G Smith | 1 |

604 Boldmere St. M. 1 Solihull 3

| | | | |
|-----------|---|-----------|-----|
| G Osborne | 0 | D Horsley | 1 |
| A Sturch | 0 | J Green | 1 |
| R Hillman | 0 | N Peake | 1 |
| A Jones | 1 | default | def |

Knock-Out Cups

Townshend – Round 1

TO1-01

Mutual Circle (4) 4 Warley Quin. (4) 2

| | | | |
|-------------|---|------------|---|
| S Goray | ½ | S Black | ½ |
| S Singhal | 0 | P Woodward | 1 |
| P Wells | 1 | J Pakenham | 0 |
| M Tallis | 1 | A Evans | 0 |
| S Robinson | ½ | P Hughes | ½ |
| S Choudhury | 1 | H Watkins | 0 |

TO1-02

Northfield Ch. (4) 2 Tamworth & D. (6) 4 ½

| | | | |
|--------------|-----|------------|-----|
| R Gough | 0 | J Howlett | 1 |
| S Bowen | 0 | A Smith | 1 |
| P Hodgkinson | 1 | D Prentice | 0 |
| M Rees | 1 | H Farrugia | 0 |
| L Wilmott | 0 | D Smith | 1 |
| default | def | default | def |
| | | handicap | 1 ½ |

TO1-03

Mutual Circ. (5) 4 Sutton Cold. (4) 2 1/2

| | | | |
|-------------|-----|-------------|---|
| M Walker | 0 | C East | 1 |
| P Thompson | ½ | D Green | ½ |
| A Woolaston | 1 | H Dhési | 0 |
| D Price | 1 | A Dhési | 0 |
| C Mills | 1 | E Brown | 0 |
| default | def | G Carpenter | 1 |
| | | handicap | ½ |

TO1-04

Sth. Birmingham (5) 4 ½ Olton (6) 2

| | | | |
|------------|---|-----------|---|
| F Malek | 1 | T Evans | 0 |
| R Trinder | ½ | B Garner | ½ |
| I Davis | 1 | K Lawson | 0 |
| P Johnson | 1 | C Kerr | 0 |
| B Green | 0 | J Clulee | 1 |
| P Phillips | 1 | W Yeomans | 0 |
| | | handicap | ½ |

TO1-05

Kynoch (5) 1 Shirley & Lucas (5) 5

| | | | |
|--------------|---|------------|---|
| W Morgan | 0 | N Foster | 1 |
| M Pecks | 0 | P McGuirk | 1 |
| B Dawson | 0 | R Healey | 1 |
| P Murphy | 0 | R Simpson | 1 |
| W Morgan | 1 | R Ball | 0 |
| Betty Dawson | 0 | B Phillips | 1 |

TO1-06

W. Mid. Police (5) 4 ½ Westminster (4) 2

| | | | |
|-------------|---|---------------|---|
| M Cooper | ½ | R Leaper | ½ |
| P Hardstaff | 0 | J Burke | 1 |
| H Quail | 1 | D Cooper | 0 |
| R Holman | ½ | R Trevis | ½ |
| B Phillips | 1 | D Littlehales | 0 |
| M Hathaway | 1 | P Stokes | 0 |
| | | handicap | ½ |

TO1-07

Westminster (5) 6 Kynoch/Barn (6) def

TO1-08

Olton (4) 4 Boldmere St. M. (5) 2 1/2

| | | | |
|-------------|---|-----------|---|
| J Gillespie | 1 | J Lakin | 0 |
| W Archibald | ½ | M Phipps | ½ |
| D Stockwin | ½ | P Johnson | ½ |
| P Singh | 1 | E Goodby | 0 |
| A Goldwater | ½ | B Dixon | ½ |
| P Simpson | ½ | R Taylor | ½ |
| | | handicap | ½ |

TO1-09

Walsall K. (4) 5 1/2 Boldmere SM. (6) 2

| | | | |
|-------------|---|----------|-----|
| P Nixon | 1 | G Harman | 0 |
| B Davies | ½ | G Smith | ½ |
| A Shrimpton | 1 | A Sturch | 0 |
| P Gavin | 1 | C Thomas | 0 |
| K Moore | 1 | B French | 0 |
| S Jones | 1 | default | def |
| | | handicap | 1 ½ |

TO1-10

Halesowen (5) 4 Wolseley (5) 2

| | | | |
|-------------|---|----------|---|
| D Digger | ½ | D Reeves | ½ |
| M Borley | ½ | G Bates | ½ |
| P Evans | 0 | P Joiner | 1 |
| J Southcote | 1 | T Gazee | 0 |
| A Taylor | 1 | K Nooney | 0 |
| J Evans | 1 | P Spence | 0 |

TO1-11

Sth. Birmingham (4) 3 Redditch (6) 4 ½

| | | | |
|------------|---|-------------|-----|
| R Hardy | ½ | J Cole | ½ |
| M Nevin | ½ | R Bricknell | ½ |
| M Loat | ½ | R Turner | ½ |
| F Dickson | ½ | M Clack | ½ |
| A Szatanik | 1 | default | def |
| T Tidman | 0 | K Krowicki | 1 |
| | | handicap | 1 ½ |

TO1-12

W. M. Police (6) 2 St. George's (4) 5 1/2

| | | | |
|------------|---|------------|-----|
| P Gough | ½ | L Collier | ½ |
| R Sullivan | 0 | L Johnson | 1 |
| J Watson | 0 | R McIntosh | 1 |
| default | 0 | J Lunn | 1 |
| default | 0 | K Wise | 1 |
| default | 0 | C Griffin | 1 |
| | | handicap | 1 ½ |

Knock-Out Trophy Draws

Terrill Trophy - Round Two

| | | |
|--|-----|---------------------------|
| Sutton Coldfield 3 or South B'ham 3 | V | Stourbridge 2A |
| Redditch 3 | V | Bushbury 3 or Kynoch 1 |
| Warley Q 2B | V | Warley Q 2A |
| Olton 2 A | V | Olton 1 |
| South B'ham 2 or Sutton Coldfield 1 | V | South B'ham 1 C |
| Shirley & L 3A | V | Mutual Circle 3 |
| South B'ham 1 A | BYE | |
| Greenlands 3 or Boldmere SM 2 | BYE | |

Townshend Trophy - Round Two

| | | |
|------------------------|-----|-----------------------|
| St. Georges 4 | V | Westminster 5 |
| Shirley & Lucas 5 | V | Olton 4 |
| Mutual Circle 5 | V | Mutual Circle 4 |
| Walsall Kipping 4 | V | Tamworth & District 6 |
| South Birmingham 5 | BYE | |
| West Midlands Police 5 | BYE | |
| Halesowen 5 | BYE | |
| Redditch 6 | BYE | |

Homer Trophy - Round One

| | | |
|--|-----|--|
| Sutton Coldfield 3 or South B'ham 3 | V | Walsall Kipping 3 |
| Bushbury 3 or Kynoch 1 | V | South B'ham 2 or Sutton Coldfield 1 |
| Wolseley 3 | V | West Bromwich 2 |
| Boldmere SM 3 | V | Shirley & L 3B |
| Lichfield 2 | BYE | |
| T & D 2A | BYE | |
| Stourbridge 2B | BYE | |
| Greenlands 3 or Boldmere SM 2 | BYE | |

Barrington Trophy - Round One

| | | |
|-------------------------|-----|--------------------|
| Boldmere SM 5 | V | South Birmingham 4 |
| Kynock 5 | V | Olton 6 |
| West Midlands Police 6 | V | Boldmere SM 6 |
| Northfield Checkmates 4 | BYE | |
| Westminster 4 | BYE | |
| Warley Quinborne 4 | BYE | |
| Sutton Coldfield 4 | BYE | |
| Wolseley 5 | BYE | |

Last Call for the Quinton Quick-Play Tourneys!

You will have to pay a late entry fee but it's still not too late to enter one of the BDCL Rapid-Play Tournaments on Sunday, 12th October. If you enter on the day you must get there before 9.30 a.m.. Tournaments for all strengths of player. See Handbook (p.43) for further details.

Puzzle Solutions

(1) White cannot draw by passive means as his King is trapped and Black will soon be able to play his Rook to the first rank with check and dire consequences (eg. 1. Bd4? Rd2 2. Bc5 Rd1+ mating next move). Therefore White plays 1. Bf2! forcing the Rook to move up the g file (as capturing on f2 is stalemate whilst a King move loses the Rook). After, say, 1.....Rg5 White then plays 2. Bg3!. If Black takes then it is again stalemate, if not then White plays 3. Bxh2 to reach a drawn Rook v Bishop ending. Neat!

(2) 1. Ne3+ Ke2 2. Bxh2 Kxe3 (other moves are far worse) 3. Kh8 Bd5 (forced, as 3. f1=Q g8=Q is a draw) 4. g8=Q Bxg8 (again forced as if Black Queens his own pawn instead then the game is at best drawn for him) 5. Bg1!. If Black now takes the Bishop on g1 then promoting to a Queen or Rook gives stalemate, whilst promoting to a Bishop or Knight allows 6. Kxg8 drawing. Yet if Black doesn't take the Bishop on g1 then 6. Bxf2 also draws at once.