

## Birmingham & District Chess League: 2008/2009 – Bulletin 4

### Division 1

	P	W	D	L	Pts
South Birmingham 'A'	7	6	1	0	13
Shirley & Lucas	6	5	1	0	11
South Birmingham 'B'	8	4	1	3	9
Halesowen	7	3	1	3	7
Lichfield	4	3	0	1	6
Kynoch/Barn	7	2	2	3	6
Walsall Kipping	3	2	1	0	5
Sutton Coldfield	6	1	3	2	5
South Birmingham 'C'	4	2	0	2	4
Olton	4	1	1	2	3
Solihull	5	0	1	4	1
Wolverhampton	3	0	0	3	0
Bushbury	6	0	0	6	0

### Division 2

	P	W	D	L	Pts
Tamworth & District 'A'	6	6	0	0	12
Warley Quinborne 'A'	6	5	1	0	11
West Bromwich	4	3	1	0	7
Stourbridge 'A'	5	3	1	1	7
Olton 'A'	8	2	3	3	7
Birmingham	5	2	2	1	6
Tamworth & District 'B'	6	2	2	2	6
Boldmere St Michael's	5	2	1	2	5
Warley Quinborne 'B'	7	2	1	4	5
South Birmingham	4	1	1	2	3
Stourbridge 'B'	7	0	2	5	2
Olton 'B'	5	0	1	4	1
Lichfield	4	0	0	4	0

### Division 3

	P	W	D	L	Pts
Shirley & Lucas 'A'	6	5	0	1	10
Mutual Circle	6	4	1	1	9
Greenlands	4	4	0	0	8
Redditch	7	3	2	2	8
Sutton Coldfield	4	3	0	1	6
Shirley & Lucas 'B'	5	3	0	2	6
Bushbury	3	2	1	0	5
Boldmere St Michael's	3	1	2	0	4
Wolseley	6	1	1	4	3
South Birmingham	4	1	0	3	2
Halesowen	5	0	1	4	1
Solihull	4	0	0	4	0
Walsall Kipping	5	0	0	5	0

### Division 4

	P	W	D	L	Pts
Mutual Circle	6	5	1	0	11
St Georges	7	4	2	1	10
South Birmingham	8	4	2	2	10
Rushall	7	3	2	2	8
Wolverhampton	5	2	3	0	7
Olton	7	3	1	3	7
Mercia	5	3	0	2	6
Walsall Kipping	5	2	1	2	5
Westminster	7	1	2	4	4
Birmingham	5	1	1	3	3
Sutton Coldfield	5	1	1	3	3
Northfield Checkmates	6	0	3	3	3
Warley Quinborne	7	1	1	5	3

### Division 5

	P	W	D	L	Pts
South Birmingham	6	6	0	0	12
Shirley & Lucas	7	5	1	1	11
Boldmere St Michael's	6	3	2	1	8
Lichfield	5	3	0	2	6
West Midlands Police	5	3	0	2	6
Mutual Circle	6	3	0	3	6
Halesowen	5	2	1	2	5
Bushbury	4	2	0	2	4
Wolseley	6	2	0	4	4
Kynoch	5	1	1	3	3
Westminster	6	0	1	5	1
Aldridge & District	5	0	0	5	0

### Division 6

	P	W	D	L	Pts
Redditch	5	4	1	0	9
Solihull	5	4	0	1	8
Greenland's	6	3	2	1	8
Tamworth & District	5	3	1	1	7
Mutual Circle	6	3	1	2	7
Boldmere St Michael's 'A'	5	2	2	1	6
Olton	5	2	0	3	4
Kynoch	5	1	0	4	2
Boldmere St Michael's 'B'	4	0	1	3	1
West Midlands Police	6	0	0	6	0

*N.B. The tables in the last Bulletin contained a couple of errors. Hopefully these ones are more accurate.*

*League Table information relates only to results so far published in the Bulletin, either in full or in summary form (see page 6).*

### Late & Re-Registrations

<u>Division 1</u>	<u>Eligible from:</u>
D. Ireland (Kynoch/Barn)	8/12/08
<u>Division 4</u>	
Philip Dyson (St. George's)	7/12/08
<u>Division 6</u>	
Stephen Woodward (Mutual Circle)	16/12/08
Nigel Cutless (Mutual Circle)	16/12/08
M. P. Norman (Solihull)	10/1/09

### Fixture Changes

4-36	Northfield Checkmates v Wolverhampton	now 13/4/09
5-26	Aldridge v Bushbury	now 11/3/09
5-36	Bushbury v Boldmere St. Michael's	now 2/4/09
6-31	Olton v Boldmere St. Michael's B	now 17/3/09
6-39	Greenlands v Tamworth & District	now 10/2/09

### Team Lightning Tourney, Tuesday 10<sup>th</sup> March

Details of this and an entry form for it are printed later in this Bulletin. It was an enjoyable and successful event last year but 41 of the 50 players who took part last year came from just seven of the League's 28 eligible clubs! It would be good to see a few more clubs represented this year. N.B. The entry fee quoted in some advance flyers is incorrect. The fee for advance entries will be a mere £4 per team (4 or 5 players). Entry on the night is allowed but is likely to attract an additional late fee of £2 per team. It is normally possible for individuals to come along and take part too, but this is dependent upon it being feasible to fit them into a suitable team.

### League Management Meeting

The next meeting is provisionally scheduled to take place on 18/3/09. I have no details of the venue as yet.

LEAGUE MATCHES

**Division 1**

128 Kynoch/Barn 3 South Birmingham A 3

A Baruch	½	J Pitcher	½
P Webster	0	J Swindells	1
K Ingram	1	L Hylands	0
N Roberts	1	M Smyth	0
A Hickey	0	G Ali	1
L Wright	½	T Walker	½

130 Solihull 2 South Birmingham B 4

M Tapp	½	D Malik	½
R Carpenter	½	L Hylands	½
T Sadler	0	K Malik	1
G Stokes	½	D Dunn	½
K Jewsbury	0	J Fallowfield	1
R Chilcott	½	R Hearne	½

131 Bushbury 2 Shirley & Lucas 4

A Crombleholme	½	I Galloway	½
D Cooper	½	S Briggs	½
D Laight	0	R Walker	1
J Staniforth	½	D Thomas	½
R Parry	½	A Walker	½
P Baggott	0	E Ward	1

132 Walsall Kipping 3 Sutton Coldfield 3

D Anderton	½	K Escott	½
D Wheeler	½	C Eckloff	½
J Bellin	½	H Stepanyan	½
D Pritchard	½	I Dhesi	½
C Bellin	½	A Kent	½
M Groombridge	½	A Stepanyan	½

135 South Birmingham C 5 Solihull 1

M Smyth	1	A Sadler	0
J Fallowfield	1	G Stokes	0
G Ali	1	K Jewsbury	0
D Whitmore	1	R Chilcott	0
N Clarke	½	J Summerfield	½
R Glass	½	I Brodie	½

136 Lichfield 4 ½ Halesowen 1 ½

P Wallace	1	S Fishburne	0
M Staples	½	J Edge	½
P Collins	½	M Hunt	½
G Lamb	½	A Ambrose	½
M Maher	1	D Curry	0
R Farmery	1	P Evans	0

137 South Brmingham A 4 Bushbury 2

J Swindells	½	L Grinsell	½
P Padilla	0	A Crombleholme	1
L Hylands	1	D Cooper	0
K Malik	1	D Laight	0
G Ali	1	J Staniforth	0
S Williams	½	R Parry	½

139 South Birmingham B 2 Knoch/Barn 4

D Malik	0	P Webster	1
L Hylands	1	K Ingram	0
K Malik	½	N Roberts	½
D Dunn	0	A Hickey	1
R Hearne	½	E Goodwin	½
S Williams	0	L Wright	1

140 Sutton Coldfield 2 ½ Shirley & L. 3 1/2

K Escott	½	D Mason	½
C Eckloff	½	I Galloway	½
H Stepanyan	½	S Briggs	½
S Folayan	def	D Thomas	1
I Dhesi	1	M Long	0
M Soszynski	0	K Child	1

141 Wolverhampton 2 Olton A 4

P Thompson	0	D Gostelow	1
F Wood	0	R Smith	1
M May	1	M Cundy	0
M Wooton	0	Richard Reynolds	1
A Samanci	½	Robert Reynolds	½
G Sands	½	D Cheshire	½

**Division Two**

207 Tamworth & D. 4 Sth. Birmingham 2

S Walton	½	F Dickson	½
<i>Corrected result, Board 6. R Glass wrongly listed as the Away player in Bulletin 2</i>			

225 South Birmingham 3 Olton B 3

D Lee	½	D Brown	½
G Hope	1	K Allen	0
R Glass	½	S Chadaway	½
T Lane	½	A Cottom	½
N Kasafir	0	R Liszewski	1
C Boivin	½	J Llewelyn	½

226 Tamworth & D. B 2 ½ Stourbridge 3 ½

M Kimberley	½	S Jukes	½
S Walton	½	J Foxall	½
R Hedges	½	E Horwill	½
J Hoddy	½	D Scriven	½
D Hoddy	0	J Loynes	1
P Oliver	½	J Humphries	½

227 Olton A 1 ½ South Birmingham 4 1/2

Richard Reynolds	1	D Lee	0
R Wallman	½	G Hope	½
D Cheshire	0	R Glass	1
J McDonald	0	T Lane	1
T Holt	0	S Ralph	1
R Liszewski	0	F Dickson	1

228 Stourbridge B 3 Tamworth & Dist. 3

B Dudley	½	M Kimberley	½
D Scriven	1	S Walton	0
J Loynes	0	R Hedges	1
J Humphries	0	J Hoddy	1
R Evans	½	D Hoddy	½
J Webster	1	Default	def

229 Birmingham 4 Boldmere St. Michael's 2

A Karim	0	J Mildenhall	1
A Pready	½	J Fagan	½
J Fender	½	A Lake	½
J Gee	1	K Thomas	0
R Pearson	1	A Wilson	0
C McConkey	1	M Biddle	0

230 Warley Quinborne B 3 Stourbridge A 3

J Fahy	1	N Harris	0
A Burnet	0	S Jukes	1
S Smith	1	J Wilson	0
J Turner	½	J Foxall	½
S Moxley	0	E Horwill	1
W Rawlings	½	J Loynes	½

231 Tamworth & D. B 3 ½ Lichfield 2 ½

M Kimberley	½	R Farmery	½
S Walton	½	J Smith	½
R Hedges	0	A Mielenewski	1
D Hoddy	1	B Homewood	0
P Oliver	1	Y Slobodyuk	0
J Howlett	½	J Masefield	½

233 Boldmere St. M 4 Warley Quinborne 2

J Mildenhall	½	J Fahy	½
J Fagan	0	S Smith	1
A Lake	½	J Turner	½
K Thomas	1	S Black	0
A Wilson	1	S Moxley	0
M Biddle	1	W Rawlings	0

234 Warley Quinborne A 3 ½ Olton A 2 ½

A Southall	1	Richard Reynolds	0
A Singh	0	R Wallman	1
B Whitehouse	1	D Cheshire	0
M Wildboar	½	J McDonald	½
A Draper	1	T Holt	0
M Doran	0	S Chadaway	1

## LEAGUE MATCHES

### Division 2 continued

#### 236 Olton A 4 ½ Warley Quinborne B 1 1/2

Richard Reynolds	1	J Fahy	0
R Wallman	0	S Smith	1
D Cheshire	½	A Burnet	½
J McDonald	1	J Turner	0
T Holt	1	S Moxley	0
W Archibald	1	W Rawlings	0

### Division 3

#### 325 Shirley & Lucas 6 Solihull Default

#### 326 Wolseley 3 Boldmere St. Michael's 3

M Chowdhury	1	P Loach	0
P Sherman	½	S Edwards	½
G Maciel	1	A Hussain	0
P Lawrence	0	P Jones	1
E Maciel	½	D Brelsforth	½
D Reeves	0	M Harrington	1

#### 328 Mutual Circle 4 Solihull 2

R Huq	1	R Chilcott	0
M Paffard	1	I Brodie	0
P Boynton	½	O Anderton	½
Garry Evans	0	R Anderton	1
Saket Singhal	½	K Harrison	½
C. Mills	1	<i>Default</i>	<i>def</i>

#### 329 Walsall Kipping 1 ½ Redditch 4 ½

W Rea	0	T Robinson	1
D Friend	½	G Stanton	½
R Patel	0	R Mitchell	1
N Young	½	I Clack	½
P Burgess	0	F Batson	1
M Savin	½	J Cole	½

#### 330 Shirley & Lucas 3 ½ Wolseley 2 ½

M Long	0	M Chowdhury	1
R Purcell	½	P Sherman	½
E Ward	1	G Maciel	0
K Child	0	P Lawrence	1
J Dale	1	E Maciel	0
J Asbury	1	G Stepanovic	<i>def</i>

#### 331 Greenlands 4 Mutual Circle 2

K Hurney	1	R Huq	0
I Ellis	0	D Fisher	1
L Wheatley	1	C Evans	0
R Peters	1	M Paffard	0
A Wiggins	0	P Boynton	1
D Bott	1	Garry Evans	0

#### 332 Bushbury 4 ½ Walsall Kipping 1 ½

P Baggott	1	D Friend	0
P Staley	1	N Young	0
J Button	1	S Beasley	0
R Brodie	½	P Burgess	½
D Molineux	1	M Savin	0
K Booth	0	D Nixon	1

#### 333 Shirley & Lucas B 4 S. Birmingham 2

L Rawson	½	T Walker	½
K Warren	½	S Ralph	½
K Gilbert	1	R Weber	0
G Christie	½	D Stockhall	½
F Jimenez	½	F Dickson	½
M Warden	1	M Nevin	0

#### 334 Halesowen 1 ½ Sutton Coldfield 4 ½

R Grimes	½	M Soszynski	½
W Peck	½	R Lawrence	½
D Curry	½	A Kent	½
G Wyle	0	C East	1
M Clark	0	N Owen	1
D Martin	0	A Stepanyan	1

#### 335 Wolseley 2 Shirley & Lucas B 4

M Chowdhury	1	L Rawson	0
P Sherman	½	K Warren	½
G Maciel	½	K Gilbert	½
P Lawrence	0	G Christie	1
G Stepanovic	0	F Jimenez	1
G Bates	0	M Warden	1

#### 336 Sutton Coldfield 4 ½ Walsall Kipp. 1 ½

M Soszynski	1	D Friend	0
L Hayden	½	N Young	½
G Windows	½	S Beasley	½
A Kent	1	P Burgess	0
R Lawrence	1	M Savin	0
C East	½	P Gavin	½

### Division 4

#### 415 Mutual Circle 3 ½ Rushall 2 ½

S Goray	½	P Leary	½
Saket Singhal	0	C Wilcox-Banks	1
P Wells	½	K Hadley	½
M Tallis	½	S Wilcox	½
L Lewis	1	S Cooksey	0
S Robinson	1	P Munro	0

#### 418 Rushall 3 ½ South Birmingham 2 ½

P Leary	1	R Hardy	0
S Wilcox	0	R Weber	1
C Styles	1	A Szatanik	0
N Parker	½	F Dickson	½
M Sangha	1	M Loat	0
P Munro	0	T Tidman	1

#### 419 Sutton Coldfield 4 ½ St. George's 1 ½

C East	½	L Collier	½
S Jobanputra	1	L Johnson	0
D Green	½	J Lunn	½
A Stepanyan	1	K Wise	0
H Dhesi	1	C Griffin	0
A Dhesi	½	R Campbell	½

#### 420 Warley Quinborne 1 Mutual Circle 5

A Parkinson	0	S Goray	1
J Rourke	0	P Wells	1
S Black	0	M Tallis	1
P Woodward	½	L Lewis	½
A Evans	0	S Robinson	1
P Hughes	½	M Walker	½

#### 421 Sth. Birmingham 3 Wolverhampton 3

R Hardy	½	G Sands	½
R Weber	0	C Haughton	1
M Nevin	0	R Dawson	1
F Dickson	1	P Hubbard	0
A Szatanik	½	B Lewis	½
M Loat	1	S Wilson	0

#### 422 Mercia 6 Northfield Check's Default

#### 424 St. George's 4 Mercia 2

L Collier	1	M Share	0
L Johnson	0	J Phillips	1
J Lunn	½	K Francis	½
K Wise	1	R Price	0
R McIntosh	1	B Smith	0
C Griffin	½	C Bateson	½

#### 425 Olton 3 ½ Sutton Coldfield 2 1/2

J Gillespie	0	C East	1
W Archibald	½	D Green	½
D Stockwin	1	E Brown	0
P Singh	0	M Brown	1
M Kerr	1	G Carpenter	0
P Simpson	1	J East	0

### Key move solutions to Chess Problems, P 8

(1) B-b3! (2) B-a4! (3) B-d4!

LEAGUE MATCHES

**Division 4 continued**

426 Birmingham 4 ½ Warley Quin. 1 1/2

H Scott	1	J Rourke	0
M Schroeder	1	J Lewis	0
B Hopkins	1	P Woodward	0
W Carter	1	J Pakenham	0
D Rowe	½	A Evans	½
A Wright	0	P Hughes	1

427 Wolverhampton 3 Mutual Circle 3

M Griffiths	0	Saket Singhal	1
D Bird	½	P Wells	½
K Bate	1	M Tallis	0
B Khoshnevis	½	L Lewis	½
B Lewis	1	M Walker	0
C di Tomaso	0	A Woollaston	1

428 Walsall Kipping 3 Sth. Birmingham 3

B Davies	½	R Hardy	½
P Nixon	0	R Weber	1
A Shrimpton	1	F Dickson	0
Doreen Anderton	1	A Szatanik	0
K Moore	½	M Loat	½
S Jones	0	T Tidman	1

429 Rushall 3 Northfield Checkmates 3

R Parker	1	P Maddocks	0
M Sangha	½	R Gough	½
P Broomhall	0	S Bowen	1
S Cooksey	½	P Hodgkinson	½
N Parker	1	M Rees	0
S Allen	0	L Willmott	1

430 Birmingham 3 Westminster 3

H Scott	½	B Steeles	½
B Hopkins	0	R Leaver	1
W Carter	1	J Burke	0
D Rowe	½	R Trevis	½
A Wright	0	D Littlehales	1
J Hill	1	H Shriane	0

431 Warley Quinborne 3 St. George's 3

J Rourke	1	L Collier	0
J Lewis	0	L Johnson	1
P Woodward	0	J Lunn	1
J Pakenham	0	K Wise	1
A Evans	1	<i>Default</i>	<i>def</i>
H Watkins	1	<i>Default</i>	<i>def</i>

437 Olton 3 ½ Warley Quinborne 2 ½

J Gillespie	½	J Lewis	½
W Archibald	½	P Woodward	½
D Stockwin	1	A Evans	0
P Singh	½	P Hughes	½
A Goldwater	0	P Wheeldon	1
J Clulee	1	P Kearns	0

438 Sth. Birmingham 4 ½ Birmingham 1 ½

R Hardy	1	H Scott	0
F Dickson	1	M Schroeder	0
A Szatanik	½	B Hopkins	½
M Loat	½	W Carter	½
T Tidman	½	D Rowe	½
F Malik	1	L Kingsley	0

**Division 5**

519 Boldmere St. M. 3 Halesowen 3

J Lakin	½	D Digger	½
S Fryer	1	M Borley	0
A Johnson	0	P Evans	1
M Phipps	0	A Taylor	1
E Goodby	1	J Southcote	0
Bill Dixon	½	J Evans	½

520 Westminster 1 Lichfield 5

P Stokes	<i>def</i>	J Marriott	1
----------	------------	------------	---

*Corrected Result: Board 5. This game appeared as 0-1 in some copies of Bulletin 3.*

521 S. Birm'gham 3 ½ Boldmere SM 2 1/2

F Malik	½	J Lakin	½
R Trinder	0	M Phipps	1
B McClory	0	E Goodby	1
I Davis	1	B Dixon	0
P Johnson	1	G Harman	0
P Phillips	1	A Sturch	0

522 Aldridge & District ½ Wolseley 5 ½

L Andrews	0	D Reeves	1
G Woodward	0	G Bates	1
A Woodward	½	P Joiner	½
G Darby	0	K Nooney	1
<i>Default</i>	<i>def</i>	T Gazee	1
<i>Default</i>	<i>def</i>	T Smith	1

523 West Mid. Police 2 Shirley & Lucas 4

M Cooper	1	N Foster	0
H Quail	1	P McGuirk	0
M Hathaway	0	G Csepregi	1
R Sullivan	0	B Knee	1
A Merritt	0	R Simpson	1
J Watson	0	R Ball	1

524 Lichfield 6 Kynoch/Barn *def*

525 Halesowen 2 ½ Sth. Birmingham 3 1/2

M Borley	0	R Trinder	1
P Evans	0	B McClory	1
A Taylor	0	P Johnson	1
J Southcote	½	B Green	½
M Vile	1	<i>Default</i>	<i>def</i>
J Evans	1	<i>Default</i>	<i>def</i>

527 Shirley & Lucas 6 Westminster *def*

528 Wolseley 2 Mutual Circle 4

D Reeves	½	M Walker	½
G Bates	1	M Al-Samir	0
D Parr	0	A Webb	1
K Nooney	½	J Homer	½
P Spence	0	P Thompson	1
T White	0	A Woollaston	1

529 Kynoch/Ban ½ Shirley & Lucas 5 ½

W Morgan	½	N Foster	½
M Peers	0	P McGuirk	1
B Dawson	0	G Csepregi	1
G Wickett	0	R Healey	1
P Murphy	0	R Simpson	1
D Hill	0	G Phillips	1

530 W. Mid. Police 1 ½ S. Birmingham 4 ½

P Hardstaff	0	F Malik	1
H Quail	0	B McClory	1
R Holman	<i>def</i>	I Davis	1
B Phillips	½	P Johnson	½
M Hathaway	1	B Green	0
R Sullivan	0	P Phillips	1

531 Mutual Circle 5 ½ Lichfield ½

M Al-Samir	1	D Fone	0
M Walker	1	A Hall	0
P Thompson	½	J Masefield	½
J Homer	1	D Short	0
A Woollaston	1	P Cooper	0
J Iqbal	1	R Smith	0

532 Boldmere St. M. 5 Aldridge & Dist. 1

J Lakin	1	L Andrews	0
S Fryer	0	S Winman	1
M Phipps	1	G Woodward	0
A Johnson	1	A Woodward	0
E Goodby	1	G Derby	0
B Dixon	1	<i>Default</i>	<i>def</i>

LEAGUE/CUP MATCHES

**Division 6**

614 W. Midlands Police ½ Redditch 3 1/2

R Sullivan	0	K Krowicki	1
M Higgins	½	R Bricknell	½
N Hathaway	<i>def</i>	M Clack	1
J Watson	<i>def</i>	P Wood	1

615 Olton ½ Greenlands 3 ½

T Evans	½	R Collett	½
B Garner	0	B Allsop	1
K Lawson	0	P Smith	1
C Kerr	0	J Lloyd	1

616 Boldmere S. M. (A) 2 Tamworth & D. 2

L Tsoi	0	A Smith	1
R Taylor	1	S Clarke	0
G Harman	1	H Farrugia	0
G Osbourne	0	D Smith	1

617 Kynoch/Barn 3 ½ West Mid. Police 1/2

G Morgan	½	R Sullivan	½
A Bolton	1	A Merritt	0
B Dawson	1	<i>Default</i>	0
D Hill	1	<i>Default</i>	0

619 Tamworth & District 4 Olton 0

P McConnell	1	B Garner	0
A Smith	1	C Kerr	0
D Prentice	1	J Clulee	0
S Clarke	1	B Yeomans	0

620 Greenlands 4 Mutual Circle 0

R Collett	1	S Choudhury	0
B Allsop	1	P Heeney	0
P Smith	1	J Iqbal	0
J Lloyd	1	C Mills	0

621 Olton 3 Solihull 1

T Evans	1	D Horsley	0
K Lawson	½	J Green	½
B Garner	½	D Randall	½
J Clulee	1	N Peake	<i>def</i>

623 W. Midlands Police 0 Greenlands 4

R Sullivan	0	R Collett	1
A Merritt	0	B Allsop	1
J Watson	0	P Smith	1
<i>Default</i>	<i>def</i>	J Lloyd	1

625 Redditch 4 Kynoch 0

A Davis	1	G Morgan	0
D Abraham	1	A Bolton	0
R Turner	1	B Dawson	0
K Day	1	D Hill	0

626 Greenlands 1 ½ Redditch 2 ½

R Collett	½	J Cole	½
B Allsop	1	A Davis	0
J Lloyd	0	D Abraham	1
G Hunter	0	R Turner	1

**Knock-Out Trophies**

**Terrill Round 2**

TE2-1

S. Birm'ham (3) 4 Stourbridge (2A) 3 1/2

T Walker	½	N Harris	½
S Ralph	½	S Jukes	½
R Weber	0	J Wilson	1
D Stockhall	½	E Horwill	½
C Boivin	1	D Scriven	0
R Hardy	0	J Loynes	1
<i>Handicap</i>	1 ½		

TE2-2

Redditch (3) 5 Kynoch/Barn (1) 4 1/2

T Robinson	½	P Webster	½
G Stanton	0	K Ingram	1
J Heath	0	N Roberts	1
R Mitchell	0	A Hickey	1
I Clack	½	L Wright	½
A Davis	½	W Morgan	½
<i>Handicap</i>	3 ½		

TE2-3

Warley Quin. (2B) 1 Warley Quin. (2A) 5

J Fahy	0	A Southall	1
S Smith	1	A Singh	0
A Burnet	0	B Whitehouse	1
J Turner	0	M Wildboar	1
S Moxley	0	A Draper	1
J Pakenham	0	M Doran	1

TE2-4

Olton (2A) 5 Olton (1) 3 ½

Richard Reynolds	½	P Holt	½
R Wallman	1	A Lloyd	0
D Cheshire	½	D Gostelow	½
J McDonald	½	R Smith	½
T Holt	0	M Cundy	1
S Chadaway	0	Robert Reynolds	1
<i>Handicap</i>	2 ½		

TE2-5

S. Birmingham (2) 6 ½ S. Birmingham (1C) 2

D Lee	0	M Smyth	1
G Hope	0	J Fallowfield	1
R Glass	1	D Whitmore	0
T Lane	1	N Clarke	0
N Kasafir	1	F Malik	0
M Nevin	1	P Johnson	0
<i>Handicap</i>	2 ½		

TE2-6

Shirley & L. (3A) 2 ½ Mutual Circ. (3) 3 ½

M Long	½	R Huq	½
E Ward	½	D Fisher	½
K Child	½	C Evans	½
J Asbury	0	M Paffard	1
J Donovan	1	P Boynton	0
<i>Default</i>	<i>def</i>	G Evans	1

**Homer Cup – Round 1**

H1-1

Sutton Coldf'ld (3) 4 ½ Walsall Kipp'ng (3) 1 ½

M Soszynski	1	W Rea	0
L Hayden	½	R Jones	½
G Windows	1	D Friend	0
A Kent	0	W Young	1
R Lawrence	1	P Burgess	0
C East	1	A Shrimpton	0

H1-2

Boldmere SM (3) 1 ½ Shirley & L. (3B) 4 ½

P Loach	½	L Rawson	½
A Hussain	0	K Warren	1
P Jones	½	K Gilbert	½
D Brelsforth	0	G Christie	1
M Harrington	½	F Jimenez	½
L Tsoi	0	M Warden	1

H1-3

Wolseley (3) 4 West Bromwich (2) 3 ½

M Chowdhury	0	N Walker	1
P Sherman	1	J Crump	0
G Maciel	1	D Davies	0
P Lawrence	½	G Wesson	½
E Maciel	0	M Uddin	1
G Bates	0	C Bryant	1
<i>Handicap</i>	1 ½		

H1-4

Bushbury (3) *def* Sutton Coldfield (1) 6

*Bushbury no card*

LEAGUE / CUP RESULTS

**Townshend – Round Two**

TO2-1

<u>St. George's (4) 4 ½ Westminster (5) 2</u>			
L Collier	1	G Goddard	0
L Johnson	½	J Houston	½
J Lunn	1	D Cooper	0
K Wise	1	R Trevis	0
R McIntosh	<i>def</i>	D Littlehales	1
P Elkington	1	P Abram	0
		<i>Handicap</i>	½

TO2-2

<u>Shirley &amp; Lucas (5) 4 Olton (4) 2 ½</u>			
N Foster	½	J Gillespie	½
P McGuirk	0	W Archibald	1
G Csepregi	0	D Stockwin	1
B Knee	1	P Singh	0
R Simpson	1	A Goldwater	0
R Ball	1	N Terry	0
<i>Handicap</i>	½		

TO2-3

<u>Mutual Circle (5) 3 Mutual Circle (4) 3 1/2</u>			
M Walker	½	S Singhal	½
M Al-Samir	1	P Wells	0
J Homer	0	M Tallis	1
A Woollaston	0	L Lewis	1
P Thompson	1	S Robinson	0
J Iqbal	0	S Choudhury	1
<i>Handicap</i>	½		

**Barrington – Round 1**

B1-1

<u>Boldmere S M (5) 3 South B'ham (4) 3 ½</u>			
J Lakin	1	R Hardy	0
S Fryer	1	R Weber	0
M Phipps	½	F Dickson	½
P Johnson	0	A Szatanik	1
E Goodby	0	M Loat	1
B Dixon	0	T Tidman	1
<i>Handicap</i>	½		

B1-2

<u>Kynoch/Barn (5) 3 Olton (6) 3 ½</u>			
W Morgan	1	T Evans	0
M Peers	0	K Lawson	1
G Morgan	1	B Garner	0
A Bolton	0	C Kerr	1
Betty Dawson	0	J Clulee	1
D Hill	1	<i>Default</i>	<i>def</i>
		<i>Handicap</i>	½

B1-3

<u>W. Mid. Police (6) 1 Boldmere St. M (6) 5</u>			
R Sullivan	0	R Taylor	1
M Higgins	0	G Harman	1
A Merritt	0	B Hillman	1
J Watson	1	C Thomas	0
<i>Default</i>	<i>def</i>	M Carrington	1
<i>Default</i>	<i>def</i>	B French	1

**Stop Press – Summary Results (included in League Tables)**

235 West Brom. 3 ½	Stourbridge B 2 ½	439 Rushall 5 ½	Olton ½	624 Mutual Circ. 2 ½	Tamworth & D. 1 1/2
238 Tamworth A 6	Birmingham <i>def</i>	441 Westminster <i>def</i>	Sth. Birmingham 6	627 Solihull 2 ½	Boldmere St. M. A 1 1/2
301 Halesowen 1 ½	Bushbury 4 ½	442 Wolverhampton 3	St. George's 3	628 Tamworth 4	West Midlands Police 0
324 Wolseley 3 ½	Halesowen 2 ½	443 Walsall Kipping 4	Northfield Check"s 2	630 Boldmere St. M. B 2	Greenlands 2
327 Sth. Birmingham 2	Sutton Coldfield 4	533 Westminster 2	Halesowen 4	632 Boldmere St. M. A 4	Kynoch/Barn <i>def</i>
337 Redditch 3	Halesowen 3	534 Bushbury 5 ½	Wolseley ½	633 West Midlands Police <i>def</i>	Solihull 4
432 St George's 3 ½	Rushall 2 ½	535 Westminster 2 ½	Kynoch/Barn 2 ½		
433 Mercia 2 ½	Olton 3 ½	537 Shirley & L. 3 ½	Mutual Circle 2 ½		
435 Mutual Circle 4	Walsall Kipping 2				

**County Chess**

Warwickshire's teams continue to excel. Having already won their first match, the U 100s defeated Worcestershire 7 ½ - 4 ½ and then went on to complete their hat-trick with a 7 - 5 win over Staffordshire Bulldogs. The U125's had a good 10 – 6 win over Worcestershire giving them a guaranteed place in the next round. The U 150s triumphed 8 ½ – 7 ½ over Staffordshire, so they too head their table. (Incidentally I did Shropshire an injustice in the last Bulletin: it was not they but Leicestershire that the U150s beat 11 – 5! Shropshire don't appear to have an U150s team this year). Finally, the Open team have been carving their way through the opposition with 12 ½ – 3 ½ and 11 ½ – 4 ½ victories (over Shropshire and Staffordshire respectively) and so head division one. *Other results featuring local teams:*

U 100s

Worcestershire. 8	Staffs. Bulldogs 4
Staffs. Terriers 7 ½	Leicestershire 4 ½
Worcestershire 8	Shropshire 4
Notts. 7	Staffordshire Terriers 5
Staffs. Bulldogs 6 ½	Staffs. Terriers 5 ½

U 125s

Shropshire 10 ½	Staffordshire 5 ½
Staffordshire 7 ½	Worcestershire 8 ½

U150s

Greater Manchester 9	Staffordshire 7
----------------------	-----------------

Open – Div 1

Staffordshire 12	Greater Manchester 4
------------------	----------------------

Open – Div 2

Derbyshire 9	Worcestershire 7
--------------	------------------

P.S. Would someone like to tell me why Staffordshire have *two* teams in the Under 100s competition?

## INDIVIDUAL TOURNEYS

### Individual Tourney Results – Round 1

#### Division 1

M Uddin (WB) 1 M Groombridge (Wsk) 0  
P Bull (WB) 0 A Southall (WQ) 1

#### Division 2

D Scriven (Sto) 0 T Lane (SB) 1  
S Smith (WQ) 1 K Allan (Olt) *def*?

#### Division 3

T Walker (SB) 0 R Lawrence (Sut) 1  
C East (Sut) 0 J Dale (S&L) 1

#### Division 4

R Hughes (WQ) 1 S Jones (Wsk) 0  
P Nixon (Wsk) 1 J Pakenham (WQ) 0  
D Green (SC) ½ P Woodward (WQ) 1 ½

#### Division 5

M Phipps (BSM) 1 ½ A Webb (MC) 1 ½  
D Price (MC) *def* B Dixon (BSM) 1  
J Lakin (BS) 0 S Choudhury (MC) 1  
M Hathaway (WMP) *def* A Johnson (BSM) 1

#### Division 6

B Garner (Olt) 1 R Hillman (BSM) 1

### Individual Tourney - 2<sup>nd</sup> Round Draw

#### Division 1

A Southall (WQ) v K Ingram (Kyn)  
D Anderton (Wsk) v M Uddin (WB)

#### Division 2

T Lane (SB) v S Smith (WQ)  
J Fahy (WQ) v T Llewelyn (Hal)  
L Hayden (SC) v R Glass (SB)  
J Turner (WQ) v G Hope (SB)

#### Division 3

R Lawrence (Sut) v A Hussain (BSM)  
J Dale (S&L) v A Kent (SC)  
S Harris (Bus) v M Paffard (MC)  
C Evans (MC) v L Rawson (S&L)

#### Division 4

P Woodward (WQ) v P Kearns (WQ)  
L Collier (StG) v H Watkins (WQ)  
S Goray (MC) v P Nixon (Wsk)  
F Dickson (SB) v P Hughes (WQ)

#### Division 5

B Dixon (BSM) v M Phipps (BSM)  
S Choudhury (MC) v A Johnson (BSM)

#### Division 6

C Mills (MC) v B Garner (Olt)  
J Clulee (Olt) v G Osborne (BSM)

### Individual Tournaments – Time Control Confusion?

It became clear at the last League Management Meeting that there is some confusion about how or whether quick-play finishes apply in Individual Tourney games. Some people, myself included, had been taking the view that whether or not an immediate quick-play finish applied was dependent upon whether the teams for which the "Individual" players were registered had opted for 'quick-play' or 'adjournment' finishes. However, Chairman of the Rules Committee, Mike Biddle, said that this was not a correct view. The BDCL's quick-play rules are clearly stated in section 8.6 of the Handbook. These are specifically drafted to apply to *team* matches and therefore have no bearing on games in the Individual Tournaments. In the Individual Tournaments the BDCL's default rules apply ie. adjournments are the norm after the end of the first playing session, and there is no mandatory quick-play finish until at least 54 moves have been played (see Regs. 8.5, 10.1, and 12.1(e)). However, Mike Biddle also implied that if two players playing a match in an Individual Tourney were to mutually agree to implement a quick-play finish in their game(s) then the Rules Committee would certainly not wish to forbid or interfere with such an arrangement. So in practice it's up to the players to decide!

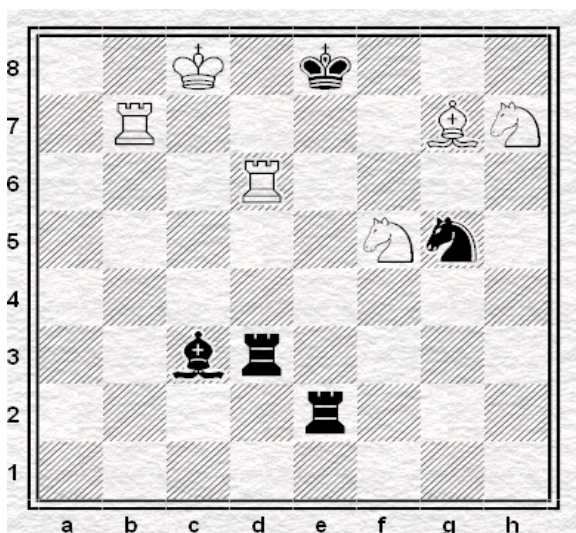
## Season End Date: Handbook Error (but Rule Change Needed too)?

The dates given in the Handbook (Rule 5.1, p.28) concerning the last permissible dates for playing league matches are incorrect. The last date for the commencement of matches should read 22<sup>nd</sup> April, whilst the final date for the completion of matches should be 15<sup>th</sup> May.

However, at the last meeting of the League Management Meeting, Joint- Records Secretary Alan Woollaston suggested that the current rule is now an anachronism. He argued that for matches where there is a Quick-play finish – ie. where a match must be completed on the initial night of play – it makes no sense for the rules to require that such a match is started 3 weeks before the official end of the season.

Hon. Gen Sec. Mike Walker opined that it would also be more logical to ensure that the last day of the season always fell on a Friday – so as to give all clubs the same number of weeks to complete their matches, regardless of which day of the week they met. However, others at the meeting were less convinced of the need for this.

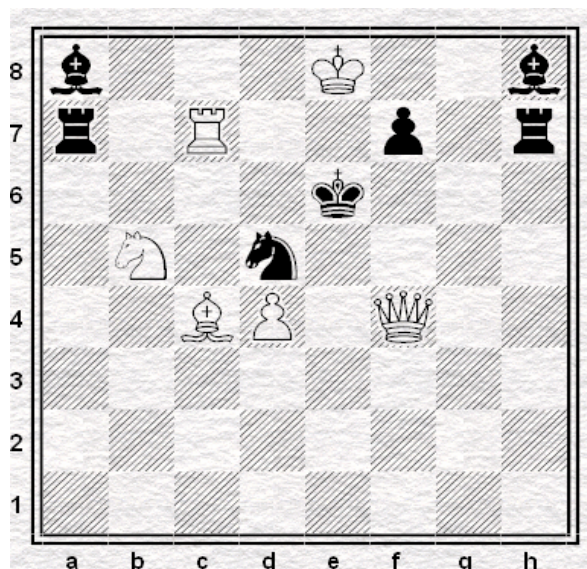
Nevertheless, some kind of change to the current rule may well be desirable. Hopefully League Officials and Club Reps will consider whether a new rule should be brought in prior to the start of the next season.



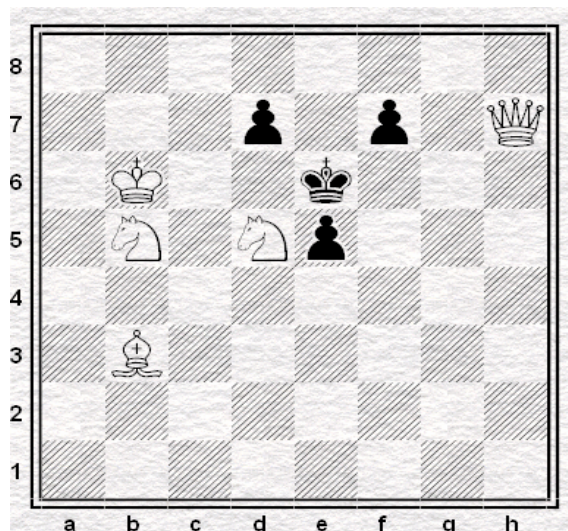
(3) Composed by Ramayds (Gameknot).

## New Year Puzzles

All puzzles: White to mate in two!



(1) Composed by Loshinsky, 1930



(2) Composed by W. A. Shinkman, 1877



**2009 LIGHTNING CHESS TEAM TOURNAMENT**

Tuesday 10<sup>th</sup> March 2009

At

Olton Chess Club

Commencing at 7.15pm

**Entry Fee :- As shown on Entry Form**

At least 80% of entry fees will be returned in prizes.

Entry forms will be published in the League Bulletin.

\_oOo\_

**ORGANIZATION OF EVENTS**

1. All players shall be registered in the BDCL for the current season.
2. Teams shall consist of four or five players, four playing in any one match.
3. Teams must play in order of strength in all matches.
4. The committee will group entries into sections of between five and eight teams based on average grades of the four strongest players nominated. Two Team prizes will be awarded in each section. There will also be a best individual prize.
5. In each section each team shall play every other team once. Colours being decided by reference to the pairing tables displayed in the playing hall.
6. All captains must report to the controller at least 15mins. before the start of the event .
7. At the end of each match the captain of the team having the white pieces on top board shall complete a result card which shall be sign by both captains and immediately handed to the controller.
8. Teams shall score one point for each game won and half a point for each drawn game. The team with the greatest number of *game* points shall win the section.
9. The Individual prize will go to the player that gives the best performance, decided by the committee .
10. Cash prizes will be awarded to the winning Teams of each section and the best Individual performance from *all* of the sections, not each section. The League Lightning Team Trophy will be awarded to the winners of the highest graded section.
11. Tie splitting will be done in the case of teams by the result of the match they played in their section. If still unresolved, then by Board Count in this match. If still unresolved, by elimination of the bottom board in this match. Should it still be unresolved a tie will be declared.

**RULES OF PLAY**

1. The FIDE Laws of Chess and the ECF Tournament Rules shall be applied in full except were modified below.
2. The time limit shall be ten seconds per move.
3. Each player in turn shall move when the buzzer sounds and neither before nor after.
4. Any player making an illegal move immediately loses the game.
5. Methods of obtaining a result which imply the existence of a game score (e.g. draw by repetition or 50 move rule) cannot be applied.
6. All games shall be played to a finish unless the controller is satisfied that neither player is attempting to win, when he may declare the game drawn.
7. The controllers decision shall be final.

# BDCL Birmingham and District Chess League

## LIGHTNING TEAM TOURNAMENT TUESDAY MARCH 10<sup>TH</sup> 2009.

All clubs and their members are reminded that the lightning team tournament will be held at the Olton Chess Club's venue, Tyseley & District Working Men's Club ( as in the handbook ).

Full details will be published in the League's Bulletin. Closing date for entries is the 1<sup>st</sup> March, but late entries will be accepted, from teams or individuals, as far as possible, up to the start of play.

**A late entry fee of £2.00 per team, or £1.00 for individuals, will be payable in such cases.**

### Entry Form

To: Mr. K. Langston, 8, Clent View Road, Bartley Green, Birmingham. B32 4LN.

Please enter the following team(s) for the BDCL Lightning Tournament in the sections specified.

The sum of £..... is enclosed to cover the entry fee(s) at £4.00 per team.

Team Name ..... Section Entered .....

Players Names (in Board Order)	Strength (give grading if known)
Board 1	
Board 2	
Board 3	
Board 4	
Reserve (if desired)	

Team Name ..... Section Entered .....

Players Names (in Board Order)	Strength (give grading if known)
Board 1	
Board 2	
Board 3	
Board 4	
Reserve (if desired)	

Team Name ..... Section Entered .....

Players Names (in Board Order)	Strength (give grading if known)
Board 1	
Board 2	
Board 3	
Board 4	
Reserve (if desired)	

Team Name ..... Section Entered .....

Players Names (in Board Order)	Strength (give grading if known)
Board 1	
Board 2	
Board 3	
Board 4	
Reserve (if desired)	

**N.B.** Please indicate who will act as team captain in each team.

**N.B.** Please make cheques payable to: B'ham & District Chess League.