

Birmingham & District Chess League: 2008/2009 – Bulletin 8

Division 1

	P	W	D	L	Pts
South Birmingham 'A'	12	10	2	0	22
Shirley & Lucas	12	9	3	0	21
Walsall Kipping	12	8	1	3	17
South Birmingham 'B'	12	7	2	3	16
Lichfield	12	6	2	4	14
Olton	12	6	2	4	14
Kynoch/Barn	12	5	3	4	13
Halesowen	12	5	2	5	12
Bushbury	12	3	1	8	7
South Birmingham 'C'	12	2	3	7	7
Sutton Coldfield	12	1	5	6	7
Solihull	12	1	2	9	4
Wolverhampton	12	0	2	10	2

Division 2

	P	W	D	L	Pts
Tamworth & District 'A'	12	9	2	1	20
Warley Quinborne 'A'	12	9	2	1	20
West Bromwich	12	6	6	0	18
Birmingham	12	6	4	2	16
Olton 'A'	12	6	3	3	15
South Birmingham	12	6	2	4	14
Stourbridge 'A'	12	5	3	4	13
Boldmere St Michael's	12	5	2	5	12
Warley Quinborne 'B'	12	4	1	7	9
Tamworth & District 'B'	12	2	3	7	7
Olton 'B'	12	2	2	8	6
Stourbridge 'B'	12	1	3	8	5
Lichfield	12	0	1	11	1

Division 3

	P	W	D	L	Pts
Greenlands	12	10	1	1	21
Mutual Circle	12	9	2	1	20
Bushbury	12	7	4	1	18
Sutton Coldfield	12	8	2	2	18
Shirley & Lucas 'A'	12	6	3	3	15
Shirley & Lucas 'B'	12	7	1	4	15
Boldmere St Michael's	12	3	3	6	9
South Birmingham	12	3	3	6	9
Wolseley	12	3	3	6	9
Redditch	12	3	2	7	8
Solihull	12	3	0	9	6
Halesowen	12	2	1	9	5
Walsall Kipping	12	1	1	10	3

Division 4

	P	W	D	L	Pts
St Georges	12	8	3	1	19
Mutual Circle	12	8	3	1	19
Rushall	12	8	2	2	18
Olton	12	7	1	4	15
Mercia	12	7	0	5	14
South Birmingham	12	6	2	4	14
Northfield Checkmates	12	3	5	4	11
Wolverhampton	12	4	3	5	11
Sutton Coldfield	12	4	1	7	9
Walsall Kipping	12	4	1	7	9
Birmingham	12	3	1	8	7
Warley Quinborne	12	2	1	9	5
Westminster	12	1	3	8	5

Division 5

	P	W	D	L	Pts
South Birmingham	11	9	2	0	20
Boldmere St Michael's	11	8	2	1	18
Shirley & Lucas	11	7	3	1	17
Mutual Circle	11	7	1	3	15
West Midlands Police	11	7	1	3	15
Bushbury	11	6	1	4	13
Lichfield	11	6	0	5	12
Halesowen	11	3	1	7	7
Wolseley	11	3	1	7	7
Kynoch	11	2	1	8	5
Westminster	11	1	1	9	3
Aldridge	11	0	0	11	0

Division 6

	P	W	D	L	Pts
Redditch	9	7	1	1	15
Solihull	9	6	1	2	13
Tamworth & District	9	5	2	2	12
Boldmere St Michaels 'A'	9	4	3	2	11
Greenland's	9	4	2	3	10
Olton	9	5	0	4	10
Mutual Circle	9	3	3	3	9
Boldmere St Michaels 'B'	9	2	2	5	6
Kynoch/Barn	9	2	0	7	4
West Midlands Police	9	0	0	9	0

Division Champions marked

Runners-up and relegated teams marked

Team Changes, Withdrawals, and Extra Promotions

(and you thought the European elections were complicated)!

The top two teams (above) in Divisions 2 to 6 earn promotion as of right for the 2009/2010 season. However, the withdrawal of three teams (Rushall, South Birmingham, and Wolverhampton) from Division 4 next year means that two extra teams (Shirley & Lucas and Mutual Circle) are set to be promoted from Division 5. As a result Tamworth & District's Div 6 team will go up into Division 5 as replacements. Northfield Checkmates are temporarily withdrawing from League play because of venue uncertainties, but their Div 4 team are re-registering en masse with St. George's and so will continue to have a presence in Division 4 but under a new flag.

Recession Hits the League

Ken Langston, League Treasure, reports that the BDCL is not immune to the economic slow-down. Although the League's finances are still very healthy, the decline in interest rates means that income from the BDCL's savings account will be much less than usual. It may be possible to mitigate this factor by investing part of the BDCL's capital elsewhere (preferably not in Icelandic banks! – Ed.) but Ken is expecting a decrease of up to £300 in the League's income.

Ritson-Morry Memorial Prizes

The Junior award for outstanding achievement in chess was won by Leo Tsoi of Boldmere St. Michael's. Leo wins the trophy and a £30 prize. He has recently been picked to play in the England under 11 team. Close runners-up were Astghik Stepanyan (Sutton Coldfield) the current British Under 14 Girls' Champion, and up-and-coming Shakeel Choudhury (Mutual Circle), the joint (U14) winner of the Staffordshire Junior Congress.

The prize for the best game went to Stewart Fishburne of Halesowen club for the game below.

Warwicks v Shrops, 2008.

1. e4 e6	9. Bd2 Qc7	17. Rab1 Qc7
2. d4 d5	10. O-O Nc6	18. Bb5+ Nc6
3. Nc3 Bb4	11. Re1 h6	19. c4 dxc4
4. e5 c5	12. Be3 Bd7	20. Rxe6 fxe6
5. dxc5 Qc7	13. Bc5 Nxe5	21. Qxg7+ Kd6
6. Nf3 Bxc3+	14. Nxe5 Qxc5	22. Rd1+ Kc5
7. bxc3 Qxc5	15. Nxd7 Kxd7	23. Qxc7 Rad8
8. Bd3 Qxc3+	16. Qg4 Ne7	24. Rb1 1-0

LEAGUE MATCHES

Division 1

102 Solihull 1 Walsall Kipping 5

M Tapp	0	D Anderton	1
R Carpenter	0	D Wheeler	1
T Sadler	0	J Bellin	1
G Stokes	1	D Pritchard	0
K Jewsbury	0	C Bellin	1
J Summerfield	0	M Groombridge	1

121 South Birmingham C 1 ½ Olton 4 ½

M Smyth	½	P Holt	½
S Williams	½	A Lloyd	½
G Ali	0	R Smith	1
D Whitmore	0	M Cundy	1
N Clarke	½	R Reynolds	½
T Walker	0	R Wallman	1

129 Olton 3 Lichfield 3

P Holt	½	P Wallace	½
A Lloyd	½	M Staples	½
M Cundy	½	J Keaveney	½
Robert Reynolds	½	P Collins	½
Richard Reynolds	½	G Lamb	½
J Mcdonald	½	M Maher	½

134 Sth. Birmingham B 6 Wolverhampton def

149 Wolverhampton 1 ½ Solihull 4 ½

P Thompson	½	M Tapp	½
Default	0	R Carpenter	1
P Porter	½	T Sadler	½
M May	0	G Stokes	1
B Khoshnevis	½	J Summerfield	½
Default	def	K Harrison	1

154 Kynoch/Barn 6 Wolverhampton def

157 South Birmingham C 3 Sutton Coldfield 3

M Smyth	½	K Escott	½
S Williams	0	C Eckloff	1
G Ali	1	H Stepanyan	0
D Whitmore	½	I Dhesi	½
N Clarke	½	G Windows	½
T Walker	½	A Stepanyan	½

158 Halesowen 3 Solihull 3

S Fishburne	1	M Tapp	0
J Edge	0	R Carpenter	1
M Hunt	½	A Sadler	½
M Bethel	1	G Stokes	def
D Jackson	½	R Chilcott	½
A Ambrose	0	J Summerfield	1

159 Lichfield 1 Walsall Kipping 5

P Wallace	0	D Anderton	1
M Staples	0	D Wheeler	1
J Keaveney	0	J Bellin	1
P Collins	½	D Pritchard	½
M Maher	0	C Bellin	1
G Lamb	½	M Groombridge	½

160 Wolverhampton 0** Bushbury 5

P Porter	0	L Cooper	1
R Marshall**	0	L Grinsell	1
F Wood	0	A Crombleholme	1
M May	½	D Cooper	½
M Wootton	½	J Staniforth	½
A Samanci	0	R Parry	1

** Player unregistered: 1 point deduction

170 Walsall Kipp. 1 ½ S. Birmingham A 4 ½

D Anderton	½	J Swindells	½
D Wheeler	½	J Emanuel	½
J Bellin	½	M Smyth	½
D Pritchard	0	L Hylands	1
C Bellin	0	D Whitmore	1
M Groombridge	0	N Clarke	1

171 Sutton Coldfield 2 Olton 4

K Escott	1	P Holt	0
C Eckloff	0	A Lloyd	1
H Stepanyan	0	R Smith	1
I Dhesi	0	M Cundy	1
R Lawrence	½	Robert Reynolds	½
C East	½	D Cheshire	½

173 Walsall Kipping 4 ½ Wolverhampton 1 ½

D Anderton	½	P Porter	½
D Wheeler	½	F Wood	½
J Bellin	1	M May	0
D Pritchard	1	M Wootton	0
C Bellin	½	A Samanci	½
M Groombridge	1	K Bate	0

174 Shirley & Lucas 5 Wolverhampton 1

D Mason	½	P Porter	½
I Galloway	1	F Wood	0
S Briggs	1	M May	0
M Long	½	M Wootton	½
R Walker	1	Default	def
D Thomas	1	Default	def

178 Halesowen 2 Bushbury 4

S Fishburne	½	L Grinsell	½
M Hunt	½	A Crombleholme	½
J Edge	0	D Cooper	1
M Bethel	0	D Laight	1
D Jackson	½	R Parry	½
A Ambrose	½	P Baggott	½

176 Lichfield 2 Shirley & Lucas 4

M Staples	0	D Mason	1
G Lamb	½	I Galloway	½
P Collins	½	S Briggs	½
M Maher	0	R Walker	1
P Farmery	0	D Thomas	1
J Smith	1	A Walker	0

177 Walsall Kipping 4 ½ Halesowen 1 ½

D Anderton	1	S Fishburne	0
J Bellin	1	J Edge	0
D Pritchard	½	M Hunt	½
M Groombridge	0	M Bethel	1
W Rea	1	D Digger	0
D Friend	1	P Evans	0

178 Bushbury 6 Solihull 0

L Cooper	1	M Tapp	0
L Grinsell	1	R Carpenter	0
A Crombleholme	1	T Sadler	0
D Cooper	1	G Stokes	0
J Staniforth	1	J Summerfield	0
R Parry	1	I Brodie	0

Division 2

246 Warley Quinborne A 4 Boldmere S.M. 2

A Southall	1	J Mildenhall	0
M Wildboar	1	J Fagan	0
A Singh	1	K Thomas	0
M Doran	½	A Wilson	½
A Agnew	½	M Biddle	½
S Smith	0	P Loach	1

251 Birmingham 2 Olton A 4

A Karim	½	Richard Reynolds	½
J Gee	½	R Wallman	½
C McConkey	½	D Cheshire	½
H Scott	½	J McDonald	½
B Hopkins	0	T Holt	1
A Wright	0	K Allen	1

252 S. Birmingham 4 ½ Warley Quin. B 1 ½

D Lee	1	J Fahy	0
G Hope	1	S Smith	0
R Glass	½	A Burnet	½
T Walker	1	J Turner	0
S Ralph	1	S Moxley	0
T Tidman	0	W Rawlings	1

262 Tamworth & D. 2 ½ Boldmere S.M. 3 ½

S Walton	0	J Mildenhall	1
R Hedges	½	A Lake	½
J Hoddy	1	A Wilson	0
D Hoddy	0	M Biddle	1
P Oliver	1	P Loach	0
A Smith	0	D Brelsforth	1

LEAGUE MATCHES

Division 2 continued

267 Warley Quin. 3 ½ Sth. Birmingham 2 ½

A Southall	1	D Lee	0
B Whitehouse	0	G Hope	1
A Draper	½	R Glass	½
A Singh	½	T Lane	½
M Wildboar	1	D Stockhall	0
M Doran	½	S Ralph	½

268 S. Birmingham 3 ½ Boldmere S.M. 2 ½

D Lee	½	J Mildenhall	½
G Hope	1	J Fagan	0
R Glass	0	A Lake	1
T Lane	1	K Thomas	0
T Walker	½	A Wilson	½
S Ralph	½	M Biddle	½

272 Stourbridge 3 Birmingham 3

N Fallowfield	½	A Karim	½
N Harris	½	A Pready	½
S Jukes	½	J Fender	½
J Foxall	0	C McConkey	1
E Horwill	½	B Hopkins	½
J Wilson	1	D Rowe	0

273 Boldmere St. M. 3 West Bromwich 3

J Mildenhall	0	N Walker	1
J Fagan	½	J Crump	½
A Lake	1	P Bull	0
K Thomas	0	D Davies	1
A Wilson	½	G Wesson	½
M Biddle	1	M Uddin	0

274 South Birmingham 3 Lichfield 3

D Lee	½	R Farmery	½
G Hope	½	J Smith	½
R Glass	½	A Giles	½
T Lane	1	B Homewood	0
T Walker	½	D Fone	½
S Ralph	0	C Kirk	1

275 Warley Quinborne B 1 ½ Olton B 4 ½

J Fahy	0	D Brown	1
S Smith	½	K Allen	½
A Burnet	½	A Cottom	½
J Turner	½	S Chadaway	½
S Moxley	0	R Liszewski	1
W Rawlings	0	J Llewelyn	1

276 Tamworth & District 3 West Bromwich 3

M Kimberley	0	N Walker	1
J Walton	0	J Crump	1
R Hedges	0	P Bull	1
J Hoddy	1	D Davies	0
D Hoddy	1	G Wesson	0
A Smith	1	M Uddin	0

277 Stourbridge B 3 ½ Lichfield 2 ½

B Dudley	½	A Giles	½
D Scriven	½	B Homewood	½
J Loynes	1	Y Slobodyuk	0
J Humphries	0	D Fone	1
R Evans	½	J Masefield	½
J Webster	1	P Cooper	0

278 Tamworth & Dist. 3 Warley Quin. A 3

P Briggs	½	A Southall	½
R Allen	½	B Whitehouse	½
K Hern	0	A Draper	1
T Bould	1	A Singh	0
D Williams	1	M Doran	0
S Kimberley	0	A Agnew	1

Division 2 Championship Play-Off

Tamworth & D. 3 ½ Warley Quin. A 2 ½

P Briggs	1	A Southall	0
R Allen	0	B Whitehouse	1
K Hern	1	A Draper	0
T Bould	½	A Singh	½
D Williams	½	M Doran	½
S Kimberley	½	A Agnew	½

Division 3

311 Solihull Def Bushbury 6

359 Mutual Circle 3 ½ Halesowen 2 ½

R Huq	½	M Hadley	½
D Fisher	0	W Peck	1
C Evans	0	D Curry	1
M Paffard	1	G Wyle	0
P Boynton	1	M Clark	def
Garry Evans	1	J Evans	0

369 Wolseley 3 Sutton Coldfield 3

M Chowdhury	0	M Soszynski	1
G Maciel	1	L Hayden	0
P Lawrence	1	G Windows	0
E Maciel	1	A Kent	0
G Stepanovic	0	C East	1
D Reeves	0	A Stepanyan	1

373 Solihull 3 ½ Halesowen 2 ½

R Chilcott	1	M Hadley	0
I Brodie	1	R Grimes	0
R Anderton	½	W Peck	½
Default	def	G Wyle	1
J Green	½	M Clark	½
D Randall	½	D Digger	½

374 Sutton Coldfield 3 Bushbury 3

M Soszynski	0	P Baggott	1
L Hayden	½	P Staley	½
G Windows	1	M Podlesak	0
A Kent	1	J Button	0
R Lawrence	½	A Schroeder	½
C East	0	D Molineux	1

375 Walsall Kipping 1 ½ Halesowen 4 ½

R Jones	0	M Hadley	1
D Friend	0	R Grimes	1
N Young	½	W Peck	½
P Burgess	0	D Curry	1
P Gavin	½	M Clark	½
B Davies	½	D Digger	½

377 Greenlands 5 ½ Solihull ½

K Hurney	1	R Chilcott	0
L Wheatley	1	I Brodie	0
I Ellis	1	R Anderton	0
I Truscott	½	K Harrison	½
R Peters	1	D Horsley	0
A Wiggins	1	J Green	0

378 Boldmere St. M. 2 ½ Bushbury 3 ½

P Loach	0	P Baggott	1
L Bennett	1	P Staley	0
A Hussain	½	M Podlesak	½
P Jones	½	A Schroeder	½
M Harrington	0	J Button	1
D Brelsforth	½	D Molineux	½

Division 4

444 Birmingham 2 ½ Mutual Circle 3 ½

H Scott	½	S Goray	½
M Schroeder	0	S Singhal	1
B Hopkins	½	P Wells	½
W Carter	½	M Tallis	½
D Rowe	½	L Lewis	½
A Wright	½	S Robinson	½

452 Birmingham 2 ½ St. George's 3 ½

H Scott	0	L Collier	1
H Schroeder	0	L Johnson	1
B Hopkins	1	J Lunn	0
W Carter	1	K Wise	0
D Rowe	0	C Griffin	1
A Wright	½	R Campbell	½

454 Walsall Kipping 2 Olton 4

R Shrimpton	0	J Gillespie	1
B Davies	½	W Archibald	½
Doreen Anderton	0	D Stockwin	1
P Nixon	1	P Singh	0
K Moore	0	K Lawson	1
S Jones	½	N Terry	½

LEAGUE/CUP MATCHES

Division 4 continued

455 Sth. Birmingham 4 Mutual Circle 2

R Hardy	½	S Goray	½
M Nevin	1	S Singhal	0
F Dickson	1	M Tallis	0
A Szatanik	½	L Lewis	½
M Loat	½	S Robinson	½
T Tidman	½	S Chowdhury	½

472 Olton 1 ½ South Birmingham 4 ½

J Gillespie	1	R Hardy	0
D Stockwin	0	F Dickson	1
M Kerr	½	A Szatanik	½
P Singh	0	T Tidman	1
A Goldwater	0	I Davis	1
J Clulee	0	P Johnson	1

473 St George's 3 Mutual Circle 3

L Collier	½	S Goray	½
L Johnson	1	S Singhal	0
J Lunn	½	M Tallis	½
K Wise	½	P Wells	½
C Griffin	½	L Lewis	½
R Campbell	0	S Robinson	1

474 Sutton Coldfield 1½ Rushall 4½

<i>Default</i>	<i>Def</i>	P Leary	1
D Green	½	R Parker	½
H Dhesi	1	R Hancox	0
A Dhesi	0	P Broomhall	1
G Carpenter	0	N Parker	1
<i>Default</i>	<i>Def</i>	P Munro	1

475 Mercia 4 Wolverhampton 2

M Share	½	G Sands	½
D Perks	1	M Griffiths	0
J Phillips	½	K Bate	½
K Francis	1	R Dawson	0
B Smith	½	P Walters	½
C Lane	½	B Lewis	½

476 Wolverhampton 2 Walsall Kipping 4

M Griffiths	0	A Shrimpton	1
B Khoshnevis	½	B Davies	½
C Haughton	½	Doreen Anderton	½
B Lewis	½	P Nixon	½
B Walker	½	S Jones	½
C di Tomaso	0	K Moore	1

477 Wolverhampton 4 ½ Warley Quin. 1 ½

G Sands	½	S Black	½
M Griffiths	1	J Lewis	0
R Dawson	1	P Woodward	0
P Walters	1	J Pakenham	0
B Walker	½	A Evans	½
P Hubbard	½	P Hughes	½

478 Walsall Kipping 2 ½ Birmingham 3 ½

A Shrimpton	½	H Scott	½
Doreen Anderton	0	M Schroeder	1
P Nixon	0	B Hopkins	1
P Gavin	1	W Carter	0
S Jones	½	D Rowe	½
K Moore	½	A Wright	½

Division 4 Championship Play-Off

Mutual Circle 3 St George's 3

S Goray	0	L Collier	1
S Singhal	1	L Johnson	0
P Wells	0	K Langston	1
M Tallis	0	J Lunn	1
S Robinson	1	K Wise	0
M Walker	1	P Elkington	0

St George's won on Board count

Division 5

536 Bushbury 1 Boldmere S. M. 5

R Brodie	0	J Lakin	1
J Fenby	0	S Fryer	1
J Whitehead	½	M Phipps	½
D Buckley	0	A Johnson	1
K Booth	0	E Goodby	1
P Donoghue	½	B Dixon	½

547 Halesowen 2 ½ Lichfield 3 ½

D Digger	½	D Fone	½
P Evans	0	G Monks	1
A Taylor	1	C Kirk	0
J Southcote	0	D Short	1
D Etheridge	1	J Dodgson	0
J Evans	0	N Griffin	1

Division 6

647 Olton 3 Mutual Circle 1

J Evans	0	S Choudhury	1
J Clulee	1	P Heeney	0
N Terry	1	J Iqbal	0
W Yeomans	1	C Mills	0

655 Kynoch/Barn 1 ½ Greenlands 2 ½

G Morgan	½	B Allsop	½
A Bolton	0	R Collett	1
B Dawson	0	J Lloyd	1
D Hill	1	<i>Default</i>	0

Knock-Out Cup Finals

Terrill Trophy

TE5-01

S. Birmingham (1A) 4 Warley Quin. (2A) 4 ½

J Swindells	1	A Southall	0
D Malik	½	C Gordon	½
L Hylands	½	A Draper	½
J Emmanuel	1	A Singh	0
K Malik	0	M Doran	1
D Dunn	1	S Smith	0
		<i>Handicap</i>	2 ½

Homer Trophy

H4-01

Shirley & L. (3B) 4 Boldmere St. M. (2) 3 ½

G Christie	0	J Mildenhall	1
L Rawson	1	J Fagan	0
K Warren	0	A Lake	1
K Gilbert	½	A Wilson	½
F Jimenez	½	M Biddle	½
M Warden	½	L Bennett	½
		<i>Handicap</i>	1 ½

Townshend Trophy

TO5-01

St. George's (4) 2 ½ Mutual Circle (4) 3 ½

L Collier	1	S Goray	0
L Johnson	½	S Singhal	½
J Lunn	0	P Wells	1
K Wise	1	M Tallis	0
C Griffin	0	L Lewis	1
R McIntosh	<i>def</i>	S Robinson	1

Barrington Trophy

B4-01

Sutton Coldfield (4) 4 Northfield Check's (4) 2

S Jobanputra	½	P Maddocks	½
D Green	½	R Gough	½
A Stepanyan	1	S Bowen	0
H Dhesi	0	P Hodgkinson	1
A Dhesi	1	M Rees	0
E Brown	1	L Willmott	0

Puzzle Solutions

- (1) 1. Ra8 Qa2 other moves lose the Queen
2. Rxa4 Qg8 (ditto)
3. Ra8 Qh7
4. Bg6 Qxg6
5. Ra6+ wins Queen
- (2) 1. Qe5 Qxe5
2. Nc4++

BDCL Individual Championship Results

Division One

Round 1

M Uddin (WB) 1 - 0 M Groombridge (WsK)
P Bull (WB) 0 - 1 A Southall (WQ)

Byes: D Anderton (WsK); K Ingram (Kyn)

Round 2

A Southall (WQ) 0 - 1 K Ingram (Kyn)
D Anderton (WsK) 1 - 0 M Uddin (WB)

Final

D Anderton (WsK) 2 - 1 K Ingram (Kyn)

Division Two

Round 1

D Scriven (Sto) 0 - 1 T Lane (SB)
S Smith (WQ) 1 - 0 K Allan (Olt)

*Byes: R Glass (SB); G Hope (SB); T Llewelyn(Hal);
J Fahy (WQ); J Turner (WQ); L Hayden (Sut)*

Round 2

T Lane (SB) 1 - 2 S Smith (WQ)
J Fahy (WQ) 0 - 1 T Llewelyn(Hal)
L Hayden (Sut) 0 - 1 R Glass (SB)
J Turner (WQ) 0 - 1 G Hope (SB)

Round 3

S Smith (WQ) 1½ - ½ G Hope (SB)
R Glass (SB) 1½ - ½ Llewelyn(Hal)

Final

R Glass (SB) 0 - 1 S Smith (WQ)

Division Three

Round 1

T Walker (SB) 0 - 1 R Lawrence (Sut)
C East (Sut) 0 - 1 J Dale (Shi)

*Byes: S Harris (Bsh); A Hussain (BSM); C Evans (MC);
M Paffard (MC); A Kent (Sut); L Rawson (Shi)*

Round 2

R Lawrence (Sut) 1 - 0 A Hussain (BSM)
J Dale (Shi) 1 - 0 A Kent (Sut)
S Harris (Bsh) 1 - 0 M Paffard (MC)
C Evans(MC) 0 - 1 L Rawson (Shi)

Round 3

L Rawson (Shi) 0 - 1 S Harris (Bsh)
R Lawrence (Sut) 1 - 0 J Dale (Shi)

Div 3 Final

R Lawrence (Sut) 1 - 0 S Harris (Bsh)

Division 4

Round 1

P Hughes (WQ); 1 - 0 S Jones (WsK)
P Nixon (WsK) 1 - 0 J Pakenham (WQ)
D Green (Sut) ½ - 1½ P Woodward (WQ)

*Byes: L Collier (StG); F Dickson (SB); H Watkins (WQ)
S Goray (MC); P Kearns (WQ)*

Round 2

P Woodward 0 - 1 P Kearns (WQ)
L Collier (StG) 1 - 0 H Watkins (WQ)
S Goray (MC) 1 - 0 P Nixon (WsK)
F Dickson; (SB) 1 - 0 P Hughes (WQ)

Round 3

F Dickson; (SB) 0 - 1 S Goray (MC)
L Collier (StG) 1 - 0 P Kearns (WQ)

Final

L Collier (StG) 1½ - ½ S Goray (MC)

Division 5

Round 1

M Phipps (BSM); 1½ - ½ A Webb (MC)
D Price (MC) *Def* - 1 B Dixon (BSM);
J Lakin (BSM) 0 - 1 S Choudury (MC)
M Hathaway (WMP) *Def* - 1 A Johnson (BSM)

Round 2

B Dixon (BSM) 0 - 1 M Phipps (BSM)
S Choudury (MC) 1 - 0 A Johnson (BSM)

Final

M Phipps (BSM) 1½ - ½ S Choudury (MC)

Division 6

Round 1

B Garner (Olt) 1 - 0 R Hillman (BSM)

Byes: J Clulee (Olt); G Osborne (BSM); C. Mills (MC)

Round 2

C. Mills (MC) 0 - 1 B Garner (Olt)
J Clulee (Olt) 0 - 1 G Osborne (BSM)

Final

B Garner (Olt) 1 - 0 G Osborne (BSM)

BDCL Dates for Your Diary

AGM: Monday 8th June at Sth. Birmingham, 7.30 p.m.
(A Management committee meeting follows the AGM).

FIXTURES MEETING: Tuesday 16th June at Olton,
7.30 p.m.

BDCL Rapid play Tournament: Sunday 11th October.

Chess for Schools

Keen readers of the Bulletin may recall that in Bulletin One I reported an initiative to provide every school with free chess sets and boards. Shortly after my report the entire scheme seemed in danger of folding because of business difficulties experienced by the sponsor. However, the latest news seems better. According to the English Chess Federation web-site, Holloid Plastics still intend to provide 100,000 free chess sets (and boards, I assume) to 10,000 schools. The current idea is for these to be distributed at "regional launch days" when school staff members will be able to collect the sets. Such launch days will be advertised locally and should be occurring from September, 2009 onwards. Maybe, BDCL members with children could alert their schools so that they are ready to take advantage of this coming windfall?

County Chess

In the "Open" category Warwickshire were the only local team to reach the National stages. However, sadly, the team then conceded their Quarter-final against Kent by a 'walk-over'. Staffordshire had the opportunity to make the Nationals too, but lost $9\frac{1}{2} - 6\frac{1}{2}$ to Surrey in the decider for the last Quarter-final place.

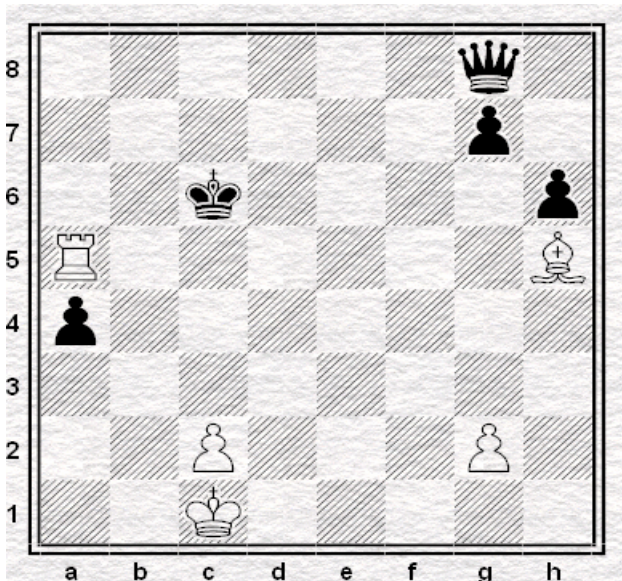
In the U150s Warwickshire play Hertfordshire in the national Semis having beaten Norfolk $9\frac{1}{2} - 6\frac{1}{2}$ in the Quarter-finals. Staffordshire lost $10\frac{1}{2} - 5\frac{1}{2}$ to Devon in their bid to reach the Quarters. Meanwhile in the U125s Warwickshire play Norfolk in their national Quarter-final (this match may have already happened by now). Worcestershire U125s lost their 'preliminary' against Lancashire $8\frac{1}{2} - 7\frac{1}{2}$ and so did not reach the Quarter-finals.

Finally, in the U100s, Warwickshire suffered another narrow defeat $5\frac{1}{2} - 6\frac{1}{2}$ at the hands of Leicestershire. Having suffered two losses in a row Warwickshire could only gain third spot in the Regional group and lost $7 - 5$ to Surrey in the play-off for a place in the national Quarter-finals. Staffordshire Terriers reached the Quarter-finals after a $6\frac{1}{2} - 5\frac{1}{2}$ victory over Shropshire but were then trounced $9\frac{1}{2} - 3\frac{1}{2}$ by Kent. Staffordshire Bulldogs' chances of reaching the Nationals were extinguished after a $4\frac{1}{2} - 6\frac{1}{2}$ defeat by Nottinghamshire.

More Junior Chess - The above scheme aims to increase the popularity of chess amongst youngsters. A more long-standing initiative: the "UK Chess Challenge" will soon be reaching its climax. This is a mind-bogglingly complex competition for under 10s and under 18s, but having started with 70,000 + children at the level of individual schools in January, it has now reached the "Giga-Final" stage at which the most talented juniors from the North and South regions of Britain will compete for a place in the national "Tera-Finals". Several local juniors are still in the hunt and will be playing in Manchester on 18th and 19th July. The culminating "Tera-Final" is scheduled to take place at Warwick School on August 22nd and 23rd. More details can be found at: www.ukchesschallenge.com .

Summer Puzzles (solutions on page 4)

(1) White to play and Win! (Study by Rinck).



(2) White to mate in two (Sam Lloyd, 1859).

