

# Birmingham & District Chess League: 2009/2010 - Bulletin No. 6

Division 1						Division 2						Division 3					
	P	W	D	L	Pts		P	W	D	L	Pts		P	W	D	L	Pts
South Birmingham 'A'	12	9	2	1	20	West Bromwich	12	10	0	2	20	Sutton Coldfield	11	9	1	1	19
Lichfield	12	9	2	1	20	Solihull	12	9	0	3	18	Bushbury	12	7	3	2	17
Walsall Kipping	12	7	1	4	15	Warley Quinborne	11	7	2	2	16	Redditch	12	7	1	4	15
Olton	12	6	1	5	13	South Birmingham	12	6	2	4	14	Shirley & Lucas 'A'	12	7	1	4	15
Tamworth & District	12	5	2	5	12	Olton 'A'	10	6	1	3	13	Solihull	12	6	2	4	14
Halesowen	12	4	3	5	11	Wolverhampton	11	6	1	4	13	Lichfield	11	6	1	4	13
South Birmingham 'B'	12	5	1	6	11	Greenlands	12	5	3	4	13	Mutual Circle	12	5	1	6	11
Shirley & Lucas	12	3	4	5	10	Mutual Circle	11	4	2	5	10	Boldmere St Michael's	11	4	2	5	10
Sutton Coldfield	12	4	2	6	10	Boldmere St Michael's	11	4	0	7	8	St George's	12	4	2	6	10
Warley Quinborne	12	3	4	5	10	Birmingham	12	3	1	8	7	Stourbridge	12	3	3	6	9
Bushbury	12	3	3	6	9	Stourbridge	10	3	0	7	6	South Birmingham	12	4	0	8	8
Kynoch/Barn	12	2	5	5	9	Tamworth & District	12	2	2	8	6	Shirley & Lucas 'B'	12	2	2	8	6
South Birmingham 'C'	12	2	2	8	6	Olton 'B'	12	2	0	10	4	Wolseley	11	2	1	8	5

Division 4						Division 5						Division 6					
	P	W	D	L	Pts		P	W	D	L	Pts		P	W	D	L	Pts
Halesowen	10	7	1	2	15	Redditch	10	7	2	1	16	Olton	11	8	1	2	17
Mercia	10	6	3	1	15	Warley Quinborne	10	7	2	1	16	Tamworth & District	11	8	1	2	17
Olton	11	6	2	3	14	Mutual Circle	10	5	2	3	12	Boldmere St Michael's 'A'	11	7	2	2	16
South Birmingham	10	6	1	3	13	Solihull	10	4	4	2	12	Warley Quinborne	11	7	2	2	16
Birmingham	11	6	1	4	13	Lichfield	10	4	3	3	11	Greenlands	11	6	1	4	13
Boldmere St Michael's	10	4	3	3	11	West Midlands Police	10	4	3	3	11	Redditch	11	6	0	5	12
Mutual Circle	8	5	0	3	10	Boldmere St Michael's	10	3	2	5	8	Wolseley	11	5	2	4	12
Shirley & Lucas	10	3	3	4	9	Bushbury	10	3	1	6	7	Halesowen	11	4	3	4	11
Walsall Kipping 'A'	10	4	1	5	9	Halesowen	10	2	2	6	6	Westminster	11	4	0	7	8
St George's	11	3	0	8	6	Westminster	10	2	2	6	6	Kynoch/Barn	11	2	1	8	5
Sutton Coldfield	10	1	2	7	4	Kynoch/Barn	10	2	1	7	5	Boldmere St Michael's 'B'	11	1	1	9	3
Walsall Kipping 'B'	11	1	1	9	3							West Midlands Police	11	1	0	10	2

N.B. These tables are provided courtesy of the Web Master.

## South Birmingham in the Dock

At the League Management Committee Meeting on 18<sup>th</sup> March attention was drawn to an entry on South Birmingham's web-site saying that their Div 3 team would not be playing any more Away fixtures this season. It was said that this notice had been on the web-site since January, 2010, or earlier, and it was noted that the team in question had defaulted four Away matches.

Committee members took a dim view of the idea of a team making advance plans to default matches, and agreed that South Birmingham club should be asked for an explanation. Sadly, no representative from South Birmingham was at the meeting. It was decided that the matter should be referred for discussion (and possible punitive action) to the Finance and General Purposes Committee.

A subsequent meeting of the FAGPC took place on 8<sup>th</sup> April. The South Birmingham representative explained that a series of unfortunate events had led to their Div 3 team lacking drivers, and that willing drivers were also in short supply amongst their reserve players. The team captain had therefore reluctantly come to the conclusion that it would not be feasible for the team to fulfil Away fixtures. As well as informing the opposing teams of the impending defaults the captain had decided to publish this information on the web-site. The South Birmingham Rep said that this action had been taken without any discussion with other officials at South

Birmingham club, and that if the officers of the club had been made aware of the proposed action then they would have not have given their approval. Nevertheless, whilst not condoning the web-site notice, South Birmingham argued that it had been reasonable for some of their Away matches to be defaulted in view of their shortage of drivers and players. This argument did not find favour with some of the committee members who noted that most club venues could be reached via public transport; that three of the defaults had been to clubs within the Birmingham City area; and suggested that drivers and reserves could and should have been drafted in from lower teams even if this meant that players in lower divisions became ineligible for their original teams. The general point was made that by defaulting multiple matches and by *not promoting* reserves from lower divisions a team could bias the outcome of promotion and relegation battles both in their own division and in the the divisions below. However, it was pointed out that teams from other league clubs had also defaulted several matches this season, probably for similar reasons.

The mood of the meeting seemed to be that some kind of sanction should be imposed on South Birmingham. However, it was clear that the only rule that SB might have breached was that implied by rule 19.5 which gives the Rules

*continued on page 5*

## Division One

### 137 Bushbury 4 ½ S. Birmingham C 1 ½

L Grinsell	1	D Whitmore	0
A Crombleholme	½	N Clarke	½
D Cooper	1	T Lane	0
J Staniforth	½	S Williams	½
D Laight	1	G Hope	0
P Staley	½	R Glass	½

### *\* Corrected Result below\**

### 143 Walsall Kipping 2 ½ Olton 3 ½

D Wheeler	0	P Holt	1
-----------	---	--------	---

*The above match and game results were reported wrongly in Bull. 5.*

### 144 Olton 3 ½ Sutton Coldfield 2 ½

P Holt	½	K Escott	½
R Smith	0	C Eckloff	1
A Lloyd	1	H Stepanyan	0
D Gostelow	0	G Ali	1
M Cundy	1	A Stepanyan	0
R Wallman	1	G Windows	0

### 146 Olton 2 ½ Tamworth & Dist. 3 ½

P Holt	0	P Briggs	1
R Smith	½	R Allen	½
A Lloyd	1	K Hern	0
M Cundy	0	T Bould	1
R Wallman	½	A Smith	½
R C Reynolds	½	P Oliver	½

### 147 Bushbury 2 Sth. Birmingham A 4

L Grinsell	0	J Swindells	1
A Crombleholme	½	D Malik	½
D Cooper	1	K Malik	0
R Parry	0	D Dunn	1
J Staniforth	0	M Smyth	1
P Staley	½	T Lane	½

### 157 Walsall Kipping 3 ½ Bushbury 2 ½

D Wheeler	½	L Grinsell	½
D Anderton	1	A Crombleholme	0
J Bellin	½	D Cooper	½
D Pritchard	½	R Parry	½
M Groombridge	0	J Staniforth	1
W Rea	1	D Laight	0

### 158 Kynoch/Barn 4 Shirley & L. 2

P Webster	½	D Mason	½
K Ingram	½	I Galloway	½
N Roberts	1	S Briggs	0
A Hickey	1	R Walker	0
L Wright	1	D Thomas	0
B Dawson	0	J Dale	1

### 159 Halesowen 2 ½ S. Birming. B 3 ½

S Fishburne	½	M Smyth	½
M Hunt	0	D Dunn	1
J Edge	0	R Hearne	1
M Bethel	½	T Lane	½
D Jackson	½	S Ralph	½
M Hadley	1	T Tidman	0

### 165 S. Birmingham C 3 Tamworth & D. 3

S Williams	0	P Briggs	1
T Lane	0	K Hern	1
G Hope	½	A Smith	½
M Drugan	½	P McConnell	½
D Lee	1	P Jones	0
R Glass	1	D Smith	0

### 166 Shirley & L. 3 Warley Quinborne 3

D Mason	1	B Whitehouse	0
I Galloway	½	A Agnew	½
S Briggs	½	A Draper	½
D Thomas	0	M Wildboar	1
J Dale	1	C Smith	0
G Christie	0	M Doran	1

### 167 S. Birmingham B 2 Warley Quin. 4

M Smyth	0	A Southall	1
D Dunn	½	B Whitehouse	½
R Hearne	½	A Agnew	½
N Clarke	½	A Draper	½
G Hope	0	S Smith	1
D Lee	½	M Doran	½

### 169 Lichfield 3 ½ Sutton Coldfield 2 ½

P Wallace	½	K Escott	½
M Staples	½	C Eckloff	½
C Bicknell	½	H Stepanyan	½
J Keaveney	1	G Ali	0
P Collins	½	A Stepanyan	½
M Maher	½	L Hayden	½

### 170 Olton 3 South Birmingham A 3

P Holt	1	J Swindells	0
R Smith	0	D Malik	1
A Lloyd	1	K Malik	0
D Gostelow	0	M Smyth	1
R Wallman	½	T Lane	½
M Cundy	½	N Clarke	½

### 171 Halesowen 3 Shirley & Lucas 3

S Fishburne	½	D Mason	½
M Hunt	½	I Galloway	½
J Edge	1	D Thomas	0
M Bethel	½	J Dale	½
M Hadley	½	G Christie	½
R Grimes	0	R Purcell	1

### 172 Bushbury 4 ½ Kynoch/Barn 1 ½

L Grinsell	½	P Webster	½
A Crombleholme	½	K Ingram	½
R Parry	1	N Roberts	0
D Laight	½	A Hickey	½
J Staniforth	1	<i>Default</i>	0
P Staley	1	<i>Default</i>	0

### 174 Kynoch/Barn 2 Lichfield 4

P Webster	½	P Wallace	½
K Ingram	0	M Staples	1
D Ireland	½	C Bicknell	½
N Roberts	½	J Keaveney	½
A Hickey	½	G Lamb	½
L Wright	0	P Collins	1

### 175 Tamworth & D. 1 S. Birmingham B 5

P Briggs	½	M Smith	½
R Allen	½	J Emanuel	½
K Hern	<i>def</i>	D Dunn	1
T Bould	0	T Lane	1
A Smith	0	N Clarke	1
P McConnell	0	T Walker	1

### 178 Lichfield 4 Warley Quinborne 2

P Wallace	1	B Whitehouse	0
C Bicknell	0	A Agnew	1
J Keaveney	½	A Draper	½
G Lamb	1	M Doran	<i>def</i>
P Collins	½	M Singh	½
M Maher	1	J Rourke	0

## Division Two

### 243 Boldmere SM. 4 ½ Birmingham 1 ½

J Mildenhall	½	J Fender	½
A Lake	½	C McConkey	½
J Fagan	1	R Pearson	0
K Thomas	1	H Scott	0
P Loach	1	M Schroeder	0
L Bennett	½	B Hopkins	½

### 252 Greenlands 2 ½ Stourbridge 3 ½

K Hurney	1	N Fallowfield	0
P Kitson	½	J Foxall	½
L Wheatley	0	B Dudley	1
A Wiggins	½	J Loynes	½
I Ellis	0	D Scriven	1
I Truscott	½	R Evans	½

253 Warley Quinborne 4 Birmingham 2

S Smith	0	J Fender	1
A Singh	½	A Pready	½
C Smith	1	J Gee	0
J Turner	½	C McConkey	½
J Fahy	1	B Hopkins	0
A Moxley	1	S Hopkins	0

264 Stourbridge 2 ½ Boldmere SM 3 ½

J Fallowfield	½	J Mildenhall	½
N Fallowfield	½	A Lake	½
E Horwill	1	J Fagan	0
B Dudley	½	K Thomas	½
S Jukes	0	P Loach	1
J Foxall	0	L Bennett	1

273 W. Bromwich 5 Tamworth & D. 1

L Cooper	1	J Hoddy	0
N Walker	1	R Hedges	0
T Sygnowski	1	D Hoddy	0
J Crump	1	D Prentice	0
J Friar	½	J Howlett	½
P Bull	½	P Jones	½

255 Olton B 2 ½ Boldmere St. M. 3 ½

A Cottom	½	J Mildenhall	½
S Chadaway	1	J Fagan	0
J McDonald	0	A Lake	1
Warchibald	0	K Thomas	1
J Gillespie	1	P Loach	0
K Lawson	0	L Bennett	1

265 Warley Quinborne 4 Wolverhampton 2

S Smith	0	M Townsend	1
A Singh	1	P Porter	0
C Smith	½	M May	½
J Turner	1	M Wootton	0
A Moxley	1	D Wightman	0
J Fahy	½	P Jones	½

274 Stourbridge 1 ½ Warley Quin. 4 ½

J Fallowfield	½	S Smith	½
N Fallowfield	0	C Smith	1
E Horwill	0	J Turner	1
S Jukes	½	A Moxley	½
J Foxall	½	J Fahy	½
J Wilson	0	A Burnet	1

258 S. Birmingham 3 ½ W. Bromwich 2 ½

D Lee	0	L Cooper	1
P Sherman	0	N Walker	1
R Glass	1	T Sygnowski	0
T Walker	½	J Crump	½
S Ralph	1	J Friar	def
P Swatridge	1	P Bull	0

266 West Bromwich 4 ½ Olton B 1 ½

L Cooper	½	A Cottom	½
N Walker	1	J McDonald	0
T Sygnowski	1	W Archibald	0
P Bull	1	J Gillespie	0
M Uddin	1	D Brown	0
C Bryant	0	D Stockwin	1

276 Wolverhampton 6 Greenlands 0 def277 Tamworth & D. 2 Wolverhampton 4

J Hoddy	½	M Townsend	½
R Hedges	½	R Marshall	½
S Walton	½	F Wood	½
T Ardin	0	M Wootton	1
D Hoddy	½	D Wightman	½
J Howlett	0	P Pearson-Jones	1

260 Tamworth & D. 3 Birmingham 3

J Hoddy	1	T Fender	0
S Walton	0	A Pready	1
T Ardin	1	J Gee	0
D Hoddy	½	C McConkey	½
D Prentice	½	M Schroeder	½
J Howlett	½	B Hopkins	½

268 Solihull 4 Boldmere St. M. 2

M Tapp	½	J Mildenhall	½
R Carpenter	1	A Lake	0
G Stokes	½	J Fagan	½
J Summerfield	1	K Thomas	0
A Sadler	1	P Loach	0
R Anderton	0	M Biddle	1

278 Olton A 4 Birmingham 2

R Reynolds	½	J Fender	½
R C Reynolds	½	C McConkey	½
T Holt	1	R Pearson	0
K Allen	1	H Scott	0
D Cheshire	½	M Schroeder	½
R Liszewski	½	B Hopkins	½

261 Olton B 2 ½ Tamworth & Dist. 3 ½

A Cottom	½	J Hoddy	½
S Chadaway	0	R Hedges	1
J McDonald	1	D Hoddy	0
W Archibald	0	P Oliver	1
J Gillespie	1	D Smith	0
M Kerr	0	H Farrugia	1

269 Tamworth & D. 3 South Birmingham 3

J Hoddy	½	D Lee	½
S Walton	½	P Sherman	½
T Ardin	½	R Glass	½
D Hoddy	½	T Walker	½
P McConnell	0	R Weber	1
J Howlett	1	M Nevin	0

**Division Three****Correction from Bulletin 5:**344 Shirley & L 1 ½ Solihull 4 ½

K Gilbert	1	<b>J Green</b>	0
-----------	---	----------------	---

262 Boldmere SM. 2 ½ Wolverhamp. 3 ½

J Mildenhall	½	M Townsend	½
A Lake	½	P Thompson	½
J Fagan	0	M Wootton	1
K Thomas	0	D Wightman	1
P Loach	½	G Sands	½
L Bennett	1	R Dawson	0

270 Olton A 3 ½ Mutual Circle 2 1/ 2

R Reynolds	½	R Huq	½
R C.Reynolds	½	N Fordham	½
T Holt	0	D Fisher	1
K Allen	½	M Tallis	½
D Cheshire	1	C Evans	0
R Liszewski	1	Garry Evans	0

364 Bushbury 2 ½ Lichfield 3 ½

P Baggott	0	J Smith	1
P Staley	½	A Giles	½
S Harris	0	B Homewood	1
J Button	1	D Fone	0
D Molineux	0	M Page	1
R Brodie	1	J Masfield	0

263 Birmingham 1 ½ Solihull 4 ½

J Fender	1	M Tapp	def
Jim Gee	0	R Carpenter	1
C McConkey	½	G Stokes	½
M Schroeder	0	J Summerfield	1
D Rowe	0	A Sadler	1
A Wright	0	K Harrison	1

271 South Birmingham 2 Greenlands 4

D Lee	0	P Kitson	1
P Sherman	½	L Wheatley	½
R Glass	0	A Wiggins	1
T Walker	1	I Ellis	0
S Ralph	0	I Truscott	1
F Dickson	½	S Shaw	½

<u>367 St George's 6 S. Birmingham 0 def</u>	<u>450 Birmingham 2 ½ Olton 3 ½</u>	<u>365 Shirley &amp; L. A 3 ½ St. George's 2 ½</u>
J Asbury 1 J Wilson 0	H Scott ½ D Brown ½	M Long ½ L Collier ½
F Jimenez ½ J Humphries ½	M Schroeder 0 K Lawson 1	K Warren 0 L Johnson 1
M Warden ½ D Scriven ½	B Hopkins ½ D Stockwin ½	L Rawson 0 P Maddocks 1
K Gilbert ½ G Toone ½	W Carter 0 J Llewelyn 1	E Ward 1 K Wise 0
P McGuirk 1 <i>Default</i> <i>def</i>	D Rowe ½ M Kerr ½	J Freman 1 R Gough 0
R Ball 1 <i>Default</i> <i>def</i>	A Wright 1 B Garner 0	M Warden 1 C Griffin 0
<u>371 Solihull ½ Bushbury 5 ½</u>	<u>453 Shirley &amp; L. 6 Birmingham 0 def</u>	<u>548 W. M. Police 3 Kynoch/Barn 3</u>
P Roper 0 P Baggott 1	<u>454 Sutton Coldfield 3 Walsall K. B 3</u>	M Cooper 1 W Morgan 0
K Jewsbury 0 P Pinfold 1	A Kent 1 M Savin 0	P Hardstaff ½ M Peers ½
I Brodie 0 P Staley 1	C East 1 P Nixon 0	H Quail 1 G Wickett 0
K Harrison 0 M Podlesak 1	D Green 0 B Davies 1	B Phillips ½ B Dawson ½
J Green 0 A Schroeder 1	A Dhesi 0 P Burgess 1	L Martin 0 P Murphy 1
A Pearson ½ J Button ½	B French 1 K Moore 0	<i>Default</i> <i>def</i> A Bolton 1
<u>372 Shirley &amp; Lucas A 2 ½ Lichfield 3 ½</u>	<u>466 Halesowen 4 ½ Sutton Coldfield 1 ½</u>	<u>550 Redditch 3 Warley Quinborne 3</u>
M Long ½ J Smith ½	R Grimes ½ D Green ½	K Krowicki 0 C Bent 1
L Rawson ½ N Fraser ½	W Peck 1 M Biernacki 0	G Stanton 1 A Holowczak 0
E Ward ½ R Farmery ½	M Clark 1 J Kandy 0	J Cole 1 W Rawlings 0
J Freeman ½ B Homewood ½	D Digger 0 A Lake 1	M Clack ½ S Black ½
M Warden 0 G Monks 1	P Evans 1 <i>Default</i> <i>def</i>	I Clack 0 J Lewis 1
K Gilbert ½ A Fraser ½	J Evans 1 <i>Default</i> <i>def</i>	D Abraham ½ J Rourke ½
<u>378 Bushbury 3 Boldmere St. M. 3</u>	<b>Division Five</b>	<u>552 Halesowen 1 ½ Redditch 4 ½</u>
P Baggott ½ D Brelforth ½	<u>509 Westminster 0 def Bushbury 6</u>	D Digger ½ K Krowicki ½
P Staley ½ A Wilson ½	<u>526 Warley Quin. 6 Kynoch/Barn 0 def</u>	P Evans 0 J Cole 1
M Podlesak ½ P Jones ½	<u>529 Westmin. 0 def Warley Quinborne 6</u>	A Taylor ½ G Stanton ½
J Button ½ M Harrington ½	<u>536 Boldmere SM. 6 Kynoch/Barn 0 def</u>	J Southcote ½ M Clack ½
A Schroeder 1 P Broomhall 0	<u>538 Solihull 2 ½ Warley Quinborne 3 ½</u>	J Taylor 0 I Clack 1
P O'Donoghue 0 J Lakin 1	R Anderton ½ C Dent ½	D Martin 0 K Day 1
<b>Division Four</b>	D Horsley 0 W Rawlings 1	<u>554 Westminster 3 W. Mid. Police 3</u>
<u>414 Birmingham 5 Sth. Birmingham 1</u>	M Trigg ½ S Moxley ½	B Steeles ½ M Cooper ½
H Scott 1 R Hardy 0	D Randall ½ S Black ½	D Nicolle ½ P Hardstaff ½
M Schroeder ½ B McClory ½	N Peake ½ J Rourke ½	R Leaper ½ H Quail ½
B Hopkins 1 A Szatanik 0	L Coxon ½ J Lewis ½	S Phillips ½ B Phillips ½
D Rowe ½ T Tidman ½	<u>546 Boldmere SM 2 ½ W. M. Police 3 ½</u>	J Burke 1 B Sullivan 0
A Wright 1 P Emanuel 0	A Johnson 1 M Cooper 0	D Cooper 0 J Watson 1
S Hopkins 1 <i>Default</i> 0	R Neale 0 P Hardstaff 1	<b>Division Six</b>
<u>436 St. George's 1 Walsall Kipping A 5</u>	B Dixon 1 B Phillips 0	<u>654 Greenlands 1 Boldmere St. M. B 3</u>
K Wise 0 D Friend 1	G Harman 0 M Hathaway 1	R Collett 0 G Osbourne 1
P Hodgkinson 0 S Beasley 1	S Wood ½ R Sullivan ½	B Allsop 1 M Carrington 0
R Macintosh 1 M Danderton 0	G Osborne 0 L Martin 1	J Lloyd 0 T White 1
R Campbell 0 M Savin 1	<u>660 Kynoch/Barn 0* Warley Quinborne 3</u>	G Hunter 0 T Gazee 1
L Willmott 1 P Nixon 1	G Morgan ½ J Pakenham ½	
<i>Default</i> <i>def</i> K Moore 1	G Wicket 0 P Woodward 1	
	P Murphy ½ S Doran ½	
	D Hill 0 H Watkins 1	

\* Point deduction under rule 13.2 as  
G. Wicket not eligible to play

<u>664 Greenlands 3 Kynoch/Barn 1</u>			
R Collett	1	G Morgan	0
B Allsop	0	A Bolton	1
J Lloyd	1	D Hill	0
G Hunter	1	Default	0

665 Westminster 0 def Redditch 4

667 Tamworth & D. 4 Boldmere S.M. 0

P Oliver	1	D Parr	0
P McConnell	1	G Woodward	0
D Prentice	1	T White	0
J Howlett	1	T Gazee	0

668 Tamworth & D. 2 ½ WM. Police 1 ½

P Oliver	½	R Sullivan	½
D Prentice	1	A Merritt	0
S Clarke	0	N Hathaway	1
M Zsigo	1	J Watson	0

669 Warley Quin. 2 ½ Tamworth 1 ½

J Pakenham	½	J Howlett	½
A Evans	1	D Prentice	0
P Munro	1	M Zsigo	0
P Wheeldon	0	H Farrugia	1

670 Tamworth & D. 4 Greenlands 0 def

678 Tamworth & D. 4 Wolseley 0 def

**Townshend Trophy**

**Corrected Player names**

TO2-2  
Shirley & L. (4) 4 ½ Walsall K. (4) A 1 ½

Board 1  
R Gough            ½ **S Beasley**            ½

Board 5  
R Ball                ½ **L Hayes**                ½

*The names of these Walsall players were incorrectly reported in some copies of Bulletin 5*

TO3-3  
Warley Quin. (6) 2 ½ Boldmere SM (5) 4

Board 3  
P Munro            1 **L Andrews**            0

*The name of this Boldmere player was incorrect in Bulletin 5.*

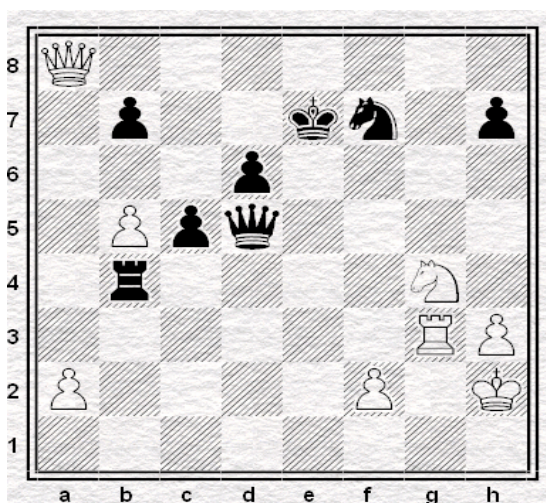
**South Birmingham in the Dock (continued from front page)**

Committee the power to impose a penalty for 'bringing the game into disrepute'. The FAGPC passed a motion that "there was a case against South Birmingham to be answered" but never specified the actual charge against the club (although 'breaching the spirit of the game' was mentioned). The question of whether South Birmingham had indeed "brought the game into disrepute" was not put to a vote. Nevertheless, despite South Birmingham not having been convicted of anything, the committee then went on to discuss possible punitive action. (I presume that this was on the Alice in Wonderland principle of "Sentence first – verdict afterwards")! A wrangle also took place as to whether the matter should be referred to the Rules Committee or should be dealt with by the FAGPC itself. It was finally decided that the case should *not* be referred to the Rules Committee and that no formal penalty on South Birmingham should be imposed. Instead the South Birmingham Rep agreed that the club would issue a voluntary written apology for the notice on the web-site and that their Div 4 team would refuse promotion even if it were to achieve a promotion spot in that division. The apology from South Birmingham is printed on the back page of this bulletin.

The FAGP Committee then went on to consider how the League's rules could be amended to reduce the chances of a similar event occurring again. Various options were discussed but it was finally decided that if any team were to default 3 matches in a season then it should be deemed to have withdrawn from the division and its match results should be voided (as per the present rule 15.2). The Rules Committee were to be asked to formulate such a new rule so it could be voted on at the next Management Meeting or at the AGM.

*Please note that the opinions expressed here, and the accounts of the two meetings mentioned, give the Bulletin Editor's personal interpretation of the events and discussions he witnessed, and should not be regarded as having any official status whatsoever.*

**White to play and Win – Position submitted by L. Wheatley.**



Solution to be published in Bulletin 7.

## Team Lightning Tournament

This took place on Tuesday, 9<sup>th</sup> March at Olton's venue. Seventeen teams of 4 or 5 players took part and these were divided into three sections according to team strength. Section A was jointly won by Sutton Coldfield 'A' and West Bromwich with 12 points. Sutton took the title on tie-break but the prize money was shared. In Section 'B' South Birmingham's 'B' team on 10 ½ points just pipped Redditch 'A' with 10 pts.. Section C was won by Mutual Circle 'C' with 14 points, whilst Sutton Coldfield 'B' were the runners-up with 12 pts..

Excellent individual performances were achieved by M. Cundy (Olton) and T. Sygnowski (W. Brom) in section 'A'; by L. Davis (Redditch) in Section 'B'; and by D. Green (Sutton), Karol Grzywaczewski (Olton), and M. Hollier (Mutual) in Section 'C'. However, the prize for overall best performance was awarded to R. Lawrence (Sutton) who achieved 5/5 in Section 'A' even though heavily out-graded in most of his games.

The tourney was run ably, and much of the time single-handedly, by John Mildenhall, who deserves much praise for his hard work. Thanks are due also to the volunteers who helped John when they weren't playing; to Olton club for the use of their venue; and to the players and BDCL Committee members who supported the tourney. Overall the event was a great success and was enjoyed by most participants. On the downside the tourney (strangely) continues to attract support from only a limited number of clubs – only 6 of the BDCL's 25 clubs fielded teams.

### Apology from South Birmingham Club

*I have received the following submission from Tim Lane, Secretary of South Birmingham Club:*

“Earlier this year South Birmingham’s web site carried the message: 'No more away days for this team [in Division 3]. Late nights away from home have forced this team to resign all away matches for the foreseeable future!'. Although this message was intended to supplement other communications, not replace them, we now realize that in tone and phrasing it gave completely the wrong impression about the team’s, and the Club’s, commitment to participating in the League.

As a Club we would therefore like, through the pages of the Bulletin, to take the opportunity to apologize to any member of the League to whom the message inadvertently caused offence. This was no part of our intention in posting the message, and we entirely regret any offence so caused. Our Club remains committed to active and complete participation in the League’s events and we look forward to competing with other Clubs in both home and away fixtures in the coming seasons”.

## Quick, Quick, Slow!

At the last League Management Meeting the issue of whether the League should outlaw adjournments in all BDCL League and Cup matches was again brought up. Advocates of universal 'Quickplay' finishes argued that this would be fairer – eg. as it would make it impossible for players to seek help from computers and/or strong players with their adjourned positions; would make life easier for players who for reasons of age, disability or lack of transport found it hard to get to distant venues; and would free up extra evenings thus benefiting both clubs who have congested fixture lists, and players who lead busy lives.

An animated discussion took place but no agreement on the desirability of compulsory Quickplay finishes could be reached. Various suggestions were put forward as to what might be done to improve the current situation without going so far as to abandon adjournments altogether. These ideas included: giving preference to the 'Quickplay' option so that adjournments would only be allowed when *both* teams wished to adjourn; extending the initial playing session (eg. so as to oblige players to make at least 36 moves before they could adjourn); and speeding up the required rate of play (which would have the same effect as the previous suggestion). A degree of dissatisfaction was also expressed (even by those who favoured Q/P finishes) about the duration of the quick-play time addition. An extra fifteen minutes, some thought, was too short a time period for a player to capitalise on his/her earlier good play. It risked turning the result of a game into a lottery in which one mistake under time pressure by either player would decide the issue.

No consensus was achieved, but those who supported rule changes related to this issue were encouraged to formulate suitable rule amendments that could be discussed and voted on at the AGM and/or next Management Meeting.

### Other Issues at the Management Meeting

Some discussion took place about the adequacy of Rule 6.2 which gives the Hon. Gen. Secretary the power to allow last minute match postponements in exceptional circumstances (eg. during bad weather). A proposal to alter this rule is likely to be put forward at the next meeting.

Concern was expressed about Tamworth & District's venue. Several club reps reported having had bad experiences at Tamworth with regard to noise, cramped conditions, and cold. Other members of the committee said that they had not experienced such problems. The Hon. Gen Sec. agreed to raise the complaints informally with Tamworth & District club.

### Late Registrations

		<u>Eligible</u>	<u>Team/Div</u>
Matthew Lazell	Solihull	02/02/10	<u>Div 5</u>
D Bennett	Westminster	05/03/10	<u>Div 6</u>